

SHARE &

TAKE  
RACK

ZERO  
WASTE



# **HOT FOOD**

## **COMIDA CALIENTE**



**NO OPENED PACKAGES**  
**SIN PAQUETES ABIERTOS**

**NO OPEN FOOD.**  
**FOOD MUST BE KEPT TO**  
**TEMPERATURE OF HEALTH**  
**INDUSTRY STANDARDS IN ORDER**  
**TO BE RE-SERVED. ANY ITEM THAT**  
**DROPS BELOW TEMPERATURE**  
**SHOULD BE OPENED AND THROWN**  
**IN THE FOOD SCRAP BIN.**  
**PACKAGING SHOULD BE THROWN**  
**IN THE TRASH.**



# MILK & PACKAGED DAIRY LECHE Y LACTOS EMPACADOS

**NO OPEN FOOD.  
FOOD MUST BE KEPT TO  
TEMPERATURE OF HEALTH  
INDUSTRY STANDARDS IN ORDER  
TO BE RE-SERVED. ANY ITEM THAT  
DROPS BELOW TEMPERATURE  
SHOULD BE OPENED AND THROWN  
IN THE FOOD SCRAP BIN. OR  
LIQUID WASTE. PACKAGING  
SHOULD BE THROWN IN THE  
TRASH.**



**NO OPENED PACKAGES  
SIN PAQUETES ABIERTOS**





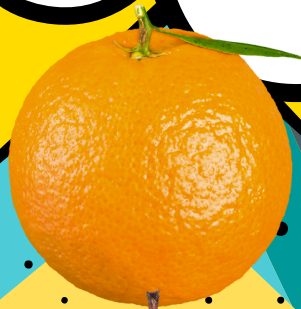
# GRAINS & PACKAGED FOODS GRANOS Y ALIMENTOS ENVASADOS



NO OPENED PACKAGES  
SIN PAQUETES ABIERTOS

# ***PACKAGED OR WHOLE FRUITS & VEGETABLES***

***FRUTAS ENVASADAS O  
ENTERAS Y VEGETALES***



***NO OPENED PACKAGES  
SIN PAQUETES ABIERTOS***



# UNOPENED SPORK, NAPKIN, STRAW PACKET

