



Agenda

EXECUTIVE COMMITTEE

Wednesday March 5, 2014

4:00 p.m.

Conference Room

128 Sun Street, Suite 101, Salinas, California

CALL TO ORDER

ROLL CALL

President	Elizabeth Silva (City of Gonzales)
Vice President	Jyl Lutes (City of Salinas)
Alternate Vice President	Simon Salinas (County of Monterey)
Immediate Past President	Fernando Armenta (County of Monterey)

GENERAL MANAGER COMMENTS

DEPARTMENT MANAGER COMMENTS

COMMITTEE MEMBER COMMENTS

PUBLIC COMMENTS

Receive public communications from audience on items which are not on the agenda. Speakers are limited to three minutes.

CONSIDERATION ITEMS

1. [Minutes of February 5, 2014 Meeting](#)
 - A. Committee Discussion
 - B. Public Comment
 - C. Recommended Committee Action – Approval
2. [January 2014 Claims and Financial Reports](#)
 - A. Receive a report from Finance Manager Roberto Moreno
 - B. Committee Discussion
 - C. Public Comment
 - D. Recommended Committee Action – Forward to the Board for Approval
3. [A Resolution Approving Service Fees Effective July 1, 2014 for Recycling, Resource Recovery, and Disposal at Authority Landfills and Transfer Stations and Administrative Services](#)
 - A. Receive a report from Finance Manager Roberto Moreno
 - B. Committee Discussion
 - C. Public Comment
 - D. Recommended Committee Action – Forward to the Board for Approval

4. [A Resolution Approving the Implementation Plan for Authority Staff to Provide Operation and Diversion Services at the Johnson Canyon Landfill](#)
 - A. Receive a report from Operations Manager Cesar Zuñiga
 - B. Committee Discussion
 - C. Public Comment
 - D. Recommended Committee Action – Forward to the Board for Approval
5. [Johnson Canyon Roadway Improvements Update](#)
 - A. Receive a report from Authority Engineer Dave Meza
 - B. Committee Discussion
 - C. Public Comment
 - D. Recommended Committee Action – Forward to the Board for Approval

FUTURE AGENDA ITEMS

6. [Agenda Items – View Ahead](#)

CLOSED SESSION

7. Pursuant to Government Code Section 54957.6 to provide instruction to the General Manager /CAO to negotiate salaries and benefits with SVSWA employees, management and non-management.

RECONVENE

ADJOURNMENT

This meeting agenda was posted at the Salinas Valley Solid Waste Authority office at 128 Sun Street, Suite 101, Salinas, on **Friday, February 28, 2014**. The Executive Committee will next meet on regular session on **Wednesday, April 2, 2014, at 4:00 p.m.** Staff reports for the Authority Executive Committee meetings are available for review at 128 Sun Street, Suite 101, Salinas, California 93901, Phone 831-775-3000 and at www.salinasvalleyrecycles.org.

In compliance with the Americans with Disabilities Act, if you need special assistance to participate in the meeting, please contact Elia Zavala, Clerk of the Board, at 831-775-3000. Notification 48 hours prior to the meeting will enable the Authority to make reasonable arrangements to ensure accessibility to this meeting (28 CFR 35.102-35.104 ADA Title II)

**MINUTES OF MEETING
SALINAS VALLEY SOLID WASTE AUTHORITY
EXECUTIVE COMMITTEE MEETING
February 5, 2014**

draft

CALL TO ORDER

President Silva called the meeting to order at 4:00 p.m.

Committee Members Present

Elizabeth Silva President
Jyl Lutes Vice President, *arrived at 4:30 p.m.*
Fernando Armenta Past President

Staff Members Present

Patrick Mathews, General Manager/CAO	Susan Warner, Diversion Manager
Roberto Morneo, Finance Manager	Elia Zavala, Clerk of the Board
Cesar Zuniga, Operations Manager	Thomas Bruen, General Counsel (<i>via telephone</i>)

ITEM NO. 1

Agenda Item

T. Bruen by ez
General Counsel Approval

Patrick Mathews
General Manager

GENERAL MANAGER COMMENTS

None

DEPARTMENT MANAGER COMMENTS

Operations Manager Zuñiga announced that two outside proposals were received for the Operations of Johnson Canyon Landfill the results will be taken to the Board for direction.

COMMITTEE MEMBER COMMENTS

None

PUBLIC COMMENT

None

CONSIDERATION ITEMS

1. Minutes of January 5, 2014, Meeting

(4:03)

Public Comment: None

Committee Action: Past President Armenta made motion to approve the minutes as presented. President Silva seconded the motion. The motion passed unanimously.

2. 2014 Employee Handbook

(4:03) General Manager/CAO Mathews presented the revised handbook which has had legal review.

Public Comment: None

Committee Discussion: None

Committee Action: Past President Armenta made motion to forward the employee handbook to the Board for approval. President Silva seconded the motion. The motion passed unanimously.

3. December 2013 Claims and Financial Reports

(4:06) Finance Manager Moreno provided a report on the month-end finances. General Manager/CAO Mathews commented on the payments to the State Water Quality Resources Board and Monterey County.

Public Comment: Teresa Rios, with County of Monterey, commented that the County has not raised its fees in the last five years.

Committee Discussion: The Committee discussed the services received from the County for the regional fee, which is separate from the local enforcement agency fee.

Committee Action: Past President Armenta made motion to forward the report to the Board. President Silva seconded the motion. The motion passed unanimously.

4. Fiscal Year 2013-14 Mid-Year Budget Adjustments

(4:12) Finance Manager Moreno provided a report on the proposed adjustments and noted decreases in expenditures. Operations Manager Zuñiga commented on the need for additional funds to repair the landfill gas flare at Johnson Canyon.

Public Comment: None

Committee Discussion: The Committee discussed the proposed adjustments and commented on grants opportunities.

Committee Action: Past President Armenta made motion to forward to the Board for approval. President Silva seconded the motion. The motion passed unanimously.

5. Fiscal Year 2014-15 Preliminary Budget

(4:23) Finance Manager Moreno presented the proposed budget that reflects no tipping fee increase, a \$3 increase to the transfer surcharge to Republic Services, elimination of revenue from imported waste, and an anticipated reduction in waste tonnage. No increase to tipping fees is possible due to the bonds refinancing. Staff commented on some needed capital improvements such as repair of the Sun Street Transfer Station tipping pad.

Public Comment: None

Committee Discussion: The Committee discussed the preliminary budget and the use of the anticipated surplus for capital improvements such as the tipping pad repairs at Sun Street Transfer Station and to fund reserves. The Committee suggested partnering with Rancho Cielo student program for construction assistance or the Hartnell College STEM program.

Committee Action: Past President Armenta made motion to forward to the Board for approval. President Silva seconded the motion. The motion passed unanimously.

FUTURE AGENDA ITEMS

6. Agenda Items – View Ahead

(4:44) The Committee reviewed the future agenda items. Staff mentioned that the GOE funding agreement would be presented to the Board at its next meeting.

CLOSED SESSION

General Manager/CAO Mathews announced that there was nothing to discuss in closed session as HR/Organizational Development Manager Gill was out sick and there was still one performance evaluation missing.

ADJOURNMENT

(4:48) President Silva adjourned the meeting.

APPROVED: _____
Elizabeth Silva, President

ATTEST: _____
Elia Zavala, Clerk of the Board



SalinasValleyRecycles.org

SALINAS VALLEY SOLID WASTE AUTHORITY

Report to the Executive Committee

ITEM NO. 2

Finance Manager/Controller-Treasurer

N/A

Legal Counsel

General Manager/CAO

Date: March 5, 2014
From: Roberto Moreno, Finance Manager
Title: January 2014 Claims and Financial Reports

RECOMMENDATION

Staff recommends acceptance of the January 2014 Claims and Financial Reports.

DISCUSSION & ANALYSIS

Please refer to the attached financial reports and checks issued report for the month of January for a discussion of the Authority's financial position as of January 31, 2014. Following are highlights of the Authority's financial activity for the month of January.

Results of Operations

For the month of January 2014, FY 2013-14 operating revenue exceeded expenditures by \$438,523. Year to Date operating revenues exceeded expenditures by \$2,213,651.

Revenues

Revenues for the month of January totaled \$1,389,274. The monthly Tipping Fees totaled \$867,402 and year to date totaled \$6,633,595 or 59.54% of the forecasted total of \$11,141,800. As of January 31, after seven months of the fiscal year (58.3% of the fiscal year) revenues total \$10,697,866 or 59.50% of the total annual revenues forecast of \$17,979,847.

Operating Expenditures

As of January 31 (58.3% of the fiscal year) year-to-date operating expenditures total \$8,484,215. This is 52.79% of the operating budget of \$16,070,455.

Capital Project Expenditures

For the month of January 2014, capital project expenditures totaled \$4,906. \$3,013 of the total was for the HHW Mobile Collection Events Grant.

Claims Checks Issued Report

The Authority's Checks Issued Report for the month of January 2014 is attached for review and acceptance. The January checks issued total \$851,773.47 of which \$250,001.74 was paid from the payroll checking account for payroll and payroll related benefits. Selected major payments to vendors are listed below.

Name	Service	Amount
Admanor Inc	Recycling, CCRMC, HHW, & Tire Amnesty Media	33,170.35
Philip Svcs Corp	HHW Hauling/Disposal Svcs & Supplies FY 13-14	28,088.88
Recology Waste Sol Inc	JC Landfill Ops & Extended Hrs	165,740.00
	JC Div Asst Fee & Material Fees	8,623.21
	JC Out Of Scope Work 07&08-13	1,450.08
SCS Field Svcs	All Sites Groundwater Monitoring Services	37,406.00
	CH, JC, JR Non-routine Engrng Svcs 11-13	4,922.04
	Non Routine - CH, LR, JC ECS	2,607.50
Waste Management	Republic Waste Delivered To MLTS	6,994.52
	JR Transfer Station Operations	57,779.10
CA BOE	Integrated Waste Mgmt Fees 10 Thru 12-13	85,292.20

Cash Balances

The cash balances section was not updated in time for the agenda distribution. The transactions for the refunding revenue bonds issued in January are still being recorded. This section of the report will be ready in time for the full Board meeting.

ATTACHMENTS

1. January 2014 Consolidated Statement of Revenues and Expenditures
2. January 2014 Consolidated CIP Expenditures Report
3. January 2014 Checks Issued Report



Salinas Valley Solid Waste Authority
Consolidated Statement of Revenues and Expenditure
For Period Ending January 31, 2014

	CURRENT BUDGET	M-T-D REV/EXP	Y-T-D REV/EXP	% OF BUDGET	REMAINING BALANCE	Y-T-D ENCUMBRANCES	UNENCUMBERED BALANCE
Revenue Summary							
Tipping Fees - Solid Waste	11,141,800	867,402	6,633,595	59.54%	4,508,205	0	4,508,205
Tipping Fees - Surcharge	1,034,000	78,385	599,720	58.00%	434,280	0	434,280
Tipping Fees - Diverted Materials	956,800	85,867	647,727	67.70%	309,073	0	309,073
AB939 Service Fee	1,732,000	144,332	1,010,324	58.33%	721,676	0	721,676
Tipping Fees - South Valley	2,318,800	183,097	1,403,349	60.52%	915,451	0	915,451
Charges for Services	117,000	0	61,949	52.95%	55,051	0	55,051
Sales of Materials	385,000	21,834	187,077	48.59%	197,923	0	197,923
Gas Royalties	187,500	0	131,379	70.07%	56,121	0	56,121
Investment Earnings	30,200	8,249	19,311	63.94%	10,889	0	10,889
Grants/Contributions	76,747	0	0	0.00%	76,747	0	76,747
Other Non-Operating Revenue	0	107	3,435	0.00%	(3,435)	0	(3,435)
Total Revenue	17,979,847	1,389,274	10,697,866	59.50%	7,281,981	0	7,281,981

Expense Summary							
Administration	2,175,500	179,355	1,247,955	57.36%	927,545	86,991	840,555
Resource Recovery	2,564,055	174,470	1,125,804	43.91%	1,438,251	629,032	809,219
Scalehouses Operations	371,930	35,298	212,068	57.02%	159,862	2,024	157,838
Transfer Stations Operations	2,645,740	204,577	1,432,631	54.15%	1,213,109	516,928	696,181
Landfills Operations	3,717,840	283,109	1,639,378	44.09%	2,078,462	1,254,087	824,375
Postclosure Maintenance	929,680	40,679	428,997	46.14%	500,683	129,838	370,845
Environmental Control Systems	439,410	33,263	153,286	34.88%	286,124	106,336	179,787
Debt Service - Interest	1,849,200	0	1,002,696	54.22%	846,504	848,859	(2,356)
Debt Service - Principal	1,100,100	0	1,097,517	99.77%	2,583	0	2,583
Closure Set-Aside	277,000	0	143,883	51.94%	133,117	0	133,117
Total Expense	16,070,455	950,752	8,484,215	52.79%	7,586,239	3,574,096	4,012,144
Revenue Over/(Under) Expenses	1,909,392	438,523	2,213,651	115.93%	(304,259)	(3,574,096)	3,269,837



Salinas Valley Solid Waste Authority
Consolidated Statement of Revenues and Expenditure
For Period Ending January 31, 2014

	CURRENT BUDGET	M-T-D REV/EXP	Y-T-D REV/EXP	% OF BUDGET	REMAINING BALANCE	Y-T-D ENCUMBRANCES	UNENCUMBERED BALANCE
Expense Summary							
Executive Administration	376,550	33,168	202,798	53.86%	173,752	3,782	169,970
Administrative Support	397,080	27,712	223,219	56.22%	173,861	59,714	114,147
Human Resources Administration	324,210	31,651	175,197	54.04%	149,013	1,977	147,036
Clerk of the Board	168,750	10,016	80,950	47.97%	87,800	4,759	83,040
Finance Administration	657,000	55,226	371,964	56.62%	285,036	10,126	274,911
Operations Administration	251,910	21,583	193,826	76.94%	58,084	6,633	51,451
Resource Recovery	681,110	51,998	345,194	50.68%	335,916	24,054	311,861
Marketing	75,000	17,671	39,713	52.95%	35,287	30,537	4,750
Public Education	167,700	5,297	48,724	29.05%	118,976	25,322	93,654
Household Hazardous Waste	671,010	64,628	293,194	43.69%	377,816	105,339	272,477
C & D Diversion	30,000	6,958	26,003	86.68%	3,998	3,998	0
Organics Diversion	587,530	469	260,537	44.34%	326,993	327,037	(44)
Diversion Services	144,750	11,864	63,819	44.09%	80,931	77,003	3,928
Tire Amnesty Grant	76,747	4,402	18,257	23.79%	58,490	32,442	26,048
DOC Grant	130,208	11,183	30,364	23.32%	99,844	3,300	96,544
Scalehouse Operations	371,930	35,298	212,068	57.02%	159,862	2,024	157,838
JR Transfer Station	723,060	57,779	367,879	50.88%	355,181	348,896	6,286
ML Transfer Station	150,000	6,856	97,666	65.11%	52,334	51,958	377
SS Disposal Operations	672,841	53,575	382,853	56.90%	289,988	28,517	261,472
SS Transfer Operations	910,749	77,445	522,749	57.40%	388,000	52,035	335,965
SS Recycling Operations	189,090	8,921	61,485	32.52%	127,605	35,524	92,081
JC Landfill Operations	3,717,840	283,109	1,639,378	44.09%	2,078,462	1,254,087	824,375
Crazy Horse Postclosure Maintenance	558,240	26,678	249,785	44.75%	308,455	93,515	214,940
Lewis Road Postclosure Maintenance	216,090	12,278	114,387	52.93%	101,703	31,459	70,244
Johnson Canyon ECS	322,540	25,867	99,169	30.75%	223,371	61,844	161,527
Jolon Road Postclosure Maintenance	155,350	1,724	64,825	41.73%	90,525	4,864	85,661
Sun Street ECS	116,870	7,396	54,117	46.31%	62,753	44,493	18,260
Debt Service - Interest	1,849,200	0	1,002,696	54.22%	846,504	848,859	(2,356)
Debt Service - Principal	1,100,100	0	1,097,517	99.77%	2,583	0	2,583
Closure Set-Aside	277,000	0	143,883	51.94%	133,117	0	133,117
Total Expense	16,070,455	950,752	8,484,215	52.79%	7,586,239	3,574,096	4,012,144
Revenue Over/(Under) Expenses	1,909,392	438,523	2,213,651	115.93%	(304,259)	(3,574,096)	3,269,837



Salinas Valley Solid Waste Authority

Consolidated CIP Expenditure Report

For Period Ending January 31, 2014

	CURRENT BUDGET	M-T-D REV/EXP	% OF BUDGET	Y-T-D REV/EXP	REMAINING BALANCE	Y-T-D ENCUMBRANCES	UNENCUMBERED BALANCE
Fund 131 - Crazy Horse Closure Fund							
131 9301 CH Closure Preparation	5,793	0	0.0 %	0	5,793	0	5,793
131 9306 CH PH 1E Liner Placement	22,960	0	100.0 %	22,957	3	0	3
131 9307 CH PH 1F Winterization	1,245	0	0.0 %	0	1,245	0	1,245
131 9312 CH PH 2E Complete Liner Work	8,942	0	0.0 %	0	8,942	0	8,942
131 9314 CH Closure Quality Assurance	16,105	0	15.1 %	2,430	13,675	0	13,675
131 9315 CH Closure Contingency	101,656	0	13.0 %	13,230	88,426	0	88,426
131 9316 CH Corrective Action Program	174,720	0	2.9 %	5,090	169,630	0	169,630
Total Fund 131 - Crazy Horse Closure Fund	331,421	0	13.2 %	43,706	287,715	0	287,715
Fund 180 - Expansion Fund							
180 9003 USDA Autoclave Studies	124,315	0	24.9 %	30,964	93,351	843	92,508
180 9021 Autoclave CEQA	576,564	1,893	1.2 %	7,064	569,500	163,167	406,334
180 9801 Ameresco JCL LFG Equipment	37,600	0	100.0 %	37,600	0	0	0
Total Fund 180 - Expansion Fund	738,479	1,893	10.2 %	75,627	662,852	164,010	498,842
Fund 211 - State Grants							
211 9201 HHW - Mobile Collection Events	63,444	3,013	6.3 %	4,007	59,437	239	59,199
Total Fund 211 - State Grants	63,444	3,013	6.3 %	4,007	59,437	239	59,199
Fund 800 - Capital Improvement Projects Fund							
800 9010 JC Roadway Improvements	1,510,214	0	1.1 %	16,632	1,493,582	14	1,493,569
800 9012 Work St Transfer Station	27,130	0	23.9 %	6,491	20,639	0	20,639
800 9101 Equipment Replacement	49,400	0	99.9 %	49,333	67	0	67
800 9317 CH SCADA System	30,000	0	0.0 %	0	30,000	29,572	428
800 9318 CH 401/404 Improvements	150,000	0	42.1 %	63,149	86,851	0	86,851
800 9501 JC LFG System Improvements	75,000	0	76.9 %	57,703	17,297	27,816	(10,519)
800 9502 JC Flare Station Improvements	320,000	0	0.5 %	1,503	318,497	0	318,497
800 9503 JC Module 1 Horizontal Wells	310,000	0	0.0 %	0	310,000	34,068	275,932



Salinas Valley Solid Waste Authority

Consolidated CIP Expenditure Report

For Period Ending January 31, 2014

	CURRENT BUDGET	M-T-D REV/EXP	Y-T-D REV/EXP	% OF BUDGET	REMAINING BALANCE	Y-T-D ENCUMBRANCES	UNENCUMBERED BALANCE
800 9504 JC Module 456B Liner Improvement	30,000	0	0	0.0 %	30,000	0	30,000
800 9701 SSTs Equipment Replacement	110,000	0	110,439	100.4 %	(439)	0	(439)
800 9702 SSTs NPDES Improvements	48,100	0	0	0.0 %	48,100	0	48,100
800 9703 SSTs Improvements	55,000	0	0	0.0 %	55,000	0	55,000
800 9704 SSTs Equipment Retrofit	0	0	840	0.0 %	(840)	0	(840)
800 9913 CH LFG to Energy Project	5,295	0	0	0.0 %	5,295	0	5,295
Total Fund 800 - Capital Improvement Proje	2,720,139	0	306,089	11.3 %	2,414,050	91,470	2,322,580
Total CIP Expenditures	3,853,483	4,906	429,430	11.1 %	3,424,053	255,719	3,168,334

Salinas Valley Solid Waste Authority
Checks Issued Report for 1/1/2014 to 1/31/2014

Check #	Name	Check Date	Amount	Check Total
12228	ADMANOR, INC BRANDING & RECYCLING OUTREACH/EDUCATION	1/9/2014	550.00	
	BRANDING & RECYCLING OUTREACH/EDUCATION		10,626.45	
	CCRMC MEDIA & MARKETING SERVICES		10,385.00	
	HHW Grant Media Campaign		1,237.50	22,798.95
12229	ALEXANDRA BRISTOW RecycleRama Performances	1/9/2014	186.01	186.01
12230	ASSURED AGGREGATES CO., INC Sun Street Maintenance Material	1/9/2014	1,869.44	1,869.44
12231	AT&T SERVICES INC TELEPHONE SERVICES TELEPHONE SERVICES TELEPHONE SERVICES TELEPHONE SERVICES TELEPHONE SERVICES	1/9/2014	658.88 34.63 282.91 247.88 16.19	1,240.49
12232	BIOENERGY ASSOCIATION OF CALIFORNIA MEMBERSHIP APPLICATION	1/9/2014	2,500.00	2,500.00
12233	BRANDY ELLEN ACEVEDO RecycleRama Performances	1/9/2014	1,551.45	1,551.45
12234	CALIFORNIA HIGHWAY ADOPTION CO. HIGHWAY 101 LITTER ABATEMENT	1/9/2014	550.00	550.00
12235	CALIFORNIA WATER SERVICE SS WATER SERVICES	1/9/2014	299.02	299.02
12236	COAST COUNTIES TRUCK & EQUIPMENT CO. SS TS VEHICLE MAINTENANCE SUPPLIES	1/9/2014	194.67	194.67
12237	COAST OIL COMPANY, LLC SS TS EQUIPMENT BIODIESEL FUEL	1/9/2014	1,485.71	1,485.71
12238	Comcast Interenet Services	1/9/2014	136.36	136.36
12239	COMMAND CENTER HHW Temporary Staff for HD20 Grant HHW Temporary Staff for HD20 Grant	1/9/2014	229.25 229.25	458.50
12240	COSTCO WHOLESALE OFFICE SUPPLIES	1/9/2014	25.17	25.17
12241	DATA FLOW Office Supplies	1/9/2014	234.93	234.93
12242	DAVE J. DEERING	1/9/2014		

Salinas Valley Solid Waste Authority
Checks Issued Report for 1/1/2014 to 1/31/2014

Check #	Name	Check Date	Amount	Check Total
	Janitorial Services		650.00	
				650.00
12243	EMILY MELISSA MOLINAR RecycleRama Performances	1/9/2014	285.57	
				285.57
12244	FERGUSON ENTERPRISES INC #795 Supplies	1/9/2014	67.33	
				67.33
12245	GOLDEN STATE TRUCK & TRAILER REPAIR SS TS EQUIP MAIN & SUPPLIES SS TS EQUIP MAIN & SUPPLIES	1/9/2014	150.50 365.00	
				515.50
12246	GRAINGER HHW SUPPLIES	1/9/2014	197.91	
				197.91
12247	GREEN RUBBER - KENNEDY AG, LP FACILITY SUPPLIES CH ECS SUPPLIES	1/9/2014	134.62 10.22	
				144.84
12248	GUERITO JC & SS PORTABLE TOILET SERVICE JC & SS PORTABLE TOILET SERVICE	1/9/2014	170.00 340.00	
				510.00
12249	HOME DEPOT 1 3/4" PADLOCK 2 PK, 48" X 24" RIDGID ON SITE BOX CH LF SUPPLIES SS TS SUPPLIES CH LF SUPPLIES FINANCE CHARGE SUPPLIES	1/9/2014	328.84 8.60 62.60 243.85 35.00 59.46	
				738.35
12250	HOPE SERVICES MATTRESS/BOX SPRING HAULING SERVICE MATTRESS/BOX SPRING HAULING SERVICE MATTRESS/BOX SPRING HAULING SERVICE	1/9/2014	1,092.00 1,152.00 966.00	
				3,210.00
12251	INFINITY STAFFING SERVICES, INC. SS TS CONTRACT DRIVERS SS TS CONTRACT DRIVERS	1/9/2014	2,430.00 945.00	
				3,375.00
12252	INTERNATIONAL INSTITUTE OF MUNICIPAL CLERKS 2014 Membership: Elia Zavala	1/9/2014	245.00	
				245.00
12253	IVY CONTRERAS RecycleRama	1/9/2014	1,687.50	
				1,687.50
12254	JOHN DAVID ACEVEDO II RecycleRama	1/9/2014	375.00	
				375.00
12255	JOSE RAMIRO URIBE VEHICLE REPAIRS & SUPPLIES	1/9/2014	425.65	
				425.65
12256	LOCAL GOVERNMENT COMMISSION	1/9/2014		

Salinas Valley Solid Waste Authority
Checks Issued Report for 1/1/2014 to 1/31/2014

Check #	Name	Check Date	Amount	Check Total
	MEMBERSHIP RENEWAL, NOV 2013 - NOV 2014		75.00	75.00
12257	MALLORY CO. INC HHW Safety Supplies HHW Safety Supplies	1/9/2014	264.20 200.88	465.08
12258	MARTA M. GRANADOS BD Meeting Interpreter BD Meeting Interpreter BD Meeting Interpreter	1/9/2014	180.00 180.00 180.00	540.00
12259	NEXTEL OF CALIFORNIA, INC Cell Phone Service Cell Phone Service Cell Phone Service Cell Phone Service	1/9/2014	45.00 53.45 207.31 124.14	429.90
12260	OFFICE DEPOT Office Supplies Office Supplies Office Supplies Office Supplies Office Supplies Office Supplies Office Supplies Office Supplies Office Supplies Office Supplies Office Supplies Office Supplies	1/9/2014	341.23 10.79 200.79 235.65 39.66 2.26 192.22 83.03 15.75 41.79 136.94 2,581.59	3,881.70
12261	**Void**	1/9/2014	0.00	0.00
12262	PACIFIC GAS AND ELECTRIC COMPANY ELECTRICAL SERVICES ELECTRICAL SERVICES ELECTRICAL SERVICES ELECTRICAL SERVICES ELECTRICAL SERVICES ELECTRICAL SERVICES ELECTRICAL SERVICES ELECTRICAL SERVICES	1/9/2014	750.43 136.68 2,648.94 987.13 22.29 2,124.66 230.08 479.18	7,379.39
12263	PHILIP SERVICES CORP HHW HAULING/DISPOSAL SERVICES & SUPPLIES HHW HAULING/DISPOSAL SERVICES & SUPPLIES HHW HAULING/DISPOSAL SERVICES & SUPPLIES HHW HAULING/DISPOSAL SERVICES & SUPPLIES	1/9/2014	11,659.15 11,571.73 2,366.00 2,492.00	28,088.88
12264	PITNEY BOWES GLOBAL Postage Machine Lease	1/9/2014	298.48	

Salinas Valley Solid Waste Authority
Checks Issued Report for 1/1/2014 to 1/31/2014

Check #	Name	Check Date	Amount	Check Total
12265	PLACEMENT PROS CONTRACT LABOR CONTRACT LABOR CONTRACT LABOR CONTRACT LABOR CONTRACT LABOR	1/9/2014	795.29 277.32 630.39 749.50 1,336.13	298.48 3,788.63
12266	RECOLOGY WASTE SOLUTIONS, INC JC OUT OF SCOPE WORK JULY & AUGUST 2013 JC OUT OF SCOPE WORK JULY & AUGUST 2013 JC OUT OF SCOPE WORK JULY & AUGUST 2013 JC OUT OF SCOPE WORK JULY & AUGUST 2013	1/9/2014	222.71 294.82 90.24 842.31	 1,450.08
12267	ROBERT B GOMEZ RecycleRama Performances	1/9/2014	438.53	438.53
12268	SALINAS CALIFORNIAN Pub Not: JC LFG Well Project	1/9/2014	235.96	235.96
12269	SALINAS VALLEY CHAMBER OF COMMERCE FEES & DUES	1/9/2014	235.00	235.00
12270	SCS FIELD SERVICES ALL SITES GRDWTR MONITORING SERVICES ALL SITES GRDWTR MONITORING SERVICES CH, JC, JR NR ENGINEERING SERVICES ALL SITES GRDWTR MONITORING SERVICES ALL SITES GRDWTR MONITORING SERVICES ALL SITES GRDWTR MONITORING SERVICES ALL SITES GRDWTR MONITORING SERVICES CH, JC, JR NR ENGINEERING SERVICES CH, JC, JR NR ENGINEERING SERVICES ALL SITES GRDWTR MONITORING SERVICES ALL SITES GRDWTR MONITORING SERVICES CH, JC, JR NR ENGINEERING SERVICES ALL SITES GRDWTR MONITORING SERVICES CH, JC, JR NR ENGINEERING SERVICES	1/9/2014	2,150.00 1,344.00 282.20 1,400.00 4,712.00 2,195.00 3,539.00 1,487.66 190.00 782.00 712.00 77.50 3,691.00 2,884.68	 25,447.04
12271	**Void**	1/9/2014	0.00	0.00
12272	SHARPS SOLUTIONS, LLC WASTE DISPOSAL	1/9/2014	120.00	120.00
12273	STURDY OIL COMPANY SS TS VEHICLE MAIN SUPPLIES & WASHES/STEMS	1/9/2014	130.00	130.00
12274	TELCO AUTOMATION, INC. PHONE SYSTEM SUPPORT	1/9/2014	147.00	147.00
12275	TOYOTA MATERIAL HANDLING Equipment Supplies	1/9/2014	374.00	

Salinas Valley Solid Waste Authority
Checks Issued Report for 1/1/2014 to 1/31/2014

Check #	Name	Check Date	Amount	Check Total
12276	WEST COAST RUBBER RECYCLING, INC Tire Amnesty Trailers for Tire Recycling	1/9/2014	2,200.00	374.00 2,200.00
12277	ADMANOR, INC TIRE AMNESTY MEDIA & MARKETING SERVICES	1/15/2014	928.15	928.15
12278	BC LABORATORIES, INC GROUND WATER ANALYTICAL SERVICES	1/15/2014	1,834.00	1,834.00
12279	CALIFORNIA CHAMBER OF COMMERCE MANDATED 2014 EMPLOYEE POSTER	1/15/2014	135.03	135.03
12280	CLINTON HENDRICKS EDUCATION ASSISTANCE	1/15/2014	284.30	284.30
12281	COAST OIL COMPANY, LLC SS TS VEHICLE DIESEL FUEL USAGE	1/15/2014	8,121.87	8,121.87
12282	COSTCO WHOLESALE Office Supplies	1/15/2014	68.94	68.94
12283	HOPE SERVICES SS TS LITTER ABATEMENT & DIVERSION SS TS LITTER ABATEMENT & DIVERSION	1/15/2014	6,704.88 3,610.32	10,315.20
12284	MALLORY CO. INC HHW Safety Supplies	1/15/2014	225.51	225.51
12285	MONTEREY REGIONAL WATER POLLUTION CONTROL AGENCY MRWPCA & CITY SERVICE FEE	1/15/2014	27.00	27.00
12286	ORCHARD SUPPLY HARDWARE LLC SS TS SUPPLIES	1/15/2014	10.43	10.43
12287	URS CORPORATION MRC ENGINEERING SERVICES	1/15/2014	1,893.00	1,893.00
12288	US BANK CORPORATE PAYMENT SYSTEM FORESTER.NET - 3 WEBINARS ZERO WASTE MASTER SERIES American Society Civil Engineers - 1 Year Membership ASSOC OF ENVIRONMENTAL PROFESSIONALS - 1 Year Memb WALMART - BD MTG SUPPLIES SMART & FINAL - OFFICE SUPPLIES Amazon.com: Replacement Equipment CVS - OFFICE SUPPLIES BOOHER DIRECT - TRAINING VIDEOS Salinas Golf & Country Club: Annual Emp. Mtg. LOGMEIN.com - NETWORK ACCESS TARGET MARKETING GROUP - HHW GUIDES INTERMEDIA EXCHANGE SERVICE - Email Hosting HUGHESNET.NET - JC Internet Connection Mikes Pizza: 12/5/13 BD Mtg Refreshment	1/22/2014	189.00 270.00 150.00 234.12 15.97 47.96 10.77 22.98 455.00 29.00 773.40 229.79 91.54 61.85	

Salinas Valley Solid Waste Authority
Checks Issued Report for 1/1/2014 to 1/31/2014

Check #	Name	Check Date	Amount	Check Total
	SMART & FINAL - OFFICE SUPPLIES		17.94	
	Sharefile.com: FTP Site December		32.95	
	ALL CITY EMISSIONS - Vehicle Smog		40.75	
	ALL CITY EMISSIONS - Vehicle Smog		40.75	
	WP - MIND TOOLS LTD		27.00	
				2,740.77
12289	**Void**	1/22/2014	0.00	
				0.00
12290	**Void**	1/22/2014	0.00	
				0.00
12291	A-1 SWEEPING	1/29/2014		
	SS TS SWEEP YARD & EXT ST 2X P/WK		1,080.00	
				1,080.00
12292	ADMANOR, INC	1/29/2014		
	BRANDING		6,495.00	
	RECYCLING OUTREACH/EDUCATION		2,948.25	
				9,443.25
12293	ASSURED AGGREGATES CO., INC	1/29/2014		
	SS TS SUPPLY		689.44	
				689.44
12294	BUSCH SYSTEMS INT'L INC	1/29/2014		
	Recycling Bins for Businesses		7,600.00	
				7,600.00
12295	CITY OF GONZALES	1/29/2014		
	GONZALES HOSTING FEES		20,833.33	
				20,833.33
12296	COAST OIL COMPANY, LLC	1/29/2014		
	SS TS EQUIPMENT DIESEL FUEL		1,479.28	
				1,479.28
12297	COMMAND CENTER	1/29/2014		
	Contract Labor		424.00	
	HHW Temporary Staff for HD20 Grant		384.25	
	HHW CONTRACT LABOR		334.00	
				1,142.25
12298	CSC OF SALINAS/YUMA	1/29/2014		
	SS TS VEHICLE MAIN SUPPLIES		27.38	
	SS TS VEHICLE MAIN SUPPLIES		5.40	
				32.78
12299	CUTTING EDGE SUPPLY	1/29/2014		
	SS EQUIPMENT SUPPLIES AND REPAIR		76.18	
	SS EQUIPMENT SUPPLIES AND REPAIR		259.09	
				335.27
12300	DAVE J. DEERING	1/29/2014		
	Janitorial Services		1,040.00	
	Janitorial Services		790.00	
				1,830.00
12301	FEDEX	1/29/2014		
	Overnight Shipments		33.80	
				33.80
12302	FIRST ALARM	1/29/2014		
	ALARM SERVICE SERVICE CALL		85.00	

Salinas Valley Solid Waste Authority
Checks Issued Report for 1/1/2014 to 1/31/2014

Check #	Name	Check Date	Amount	Check Total
				85.00
12303	GOLDEN STATE TRUCK & TRAILER REPAIR	1/29/2014		
	SS TS VEHICLE MAINTENANCE		47.25	
	SS TS VEHICLE MAINTENANCE		239.00	
	SS TS VEHICLE MAINTENANCE		1,239.32	
	SS TS VEHICLE MAINTENANCE		178.68	
	SS TS VEHICLE MAINTENANCE		239.00	
	SS TS VEHICLE MAINTENANCE		544.78	
	SS TS VEHICLE MAINTENANCE		2,021.03	
	SS EQUIPMENT SERVICE AND REPAIRS		547.64	
	SS EQUIPMENT SERVICE AND REPAIRS		1,988.37	
	SS TS VEHICLE MAINTENANCE		273.00	
	SS TS VEHICLE MAINTENANCE SUPPLIES		813.75	
	SS TS EQUIP MAIN REPAIRS/SUPPLIES		239.00	
	SS EQUIPMENT SERVICE AND REPAIRS		624.75	
				8,995.57
12304	**Void**	1/29/2014	0.00	
				0.00
12305	GONZALES CHAMBER OF COMMERCE ANNUAL MEMBERSHIP	1/29/2014	75.00	
				75.00
12306	GRAINGER SUPPLIES	1/29/2014	259.63	
				259.63
12307	GREENWASTE RECOVERY INC. MRF CARPET COLLECTION	1/29/2014	500.00	
				500.00
12308	GUERITO JC & SS PORTABLE TOILET SERVICE JC & SS PORTABLE TOILET SERVICE	1/29/2014	170.00 340.00	
				510.00
12309	INFINITY STAFFING SERVICES, INC. CONTRACT LABOR CONTRACT LABOR SS TS CONTRACT STAFFING	1/29/2014	999.00 1,046.25 1,120.50	
				3,165.75
12310	J D BLACK Office Supplies Reimbursement	1/29/2014	26.70	
				26.70
12311	LIEBERT CASSIDY WHITMORE ANNUAL MEMBERSHIP	1/29/2014	3,105.00	
				3,105.00
12312	LINDA VALLEJO GRANT WRITING SEMINAR	1/29/2014	600.00	
				600.00
12313	LUMBERMENS INC SUPPLIES	1/29/2014	14.73	
				14.73
12314	MANUEL TINAJERO SS TS GROUNDS MAINTENANCE	1/29/2014	1,380.00	
				1,380.00
12315	MONTEREY AUTO SUPPLY INC	1/29/2014		

Salinas Valley Solid Waste Authority
Checks Issued Report for 1/1/2014 to 1/31/2014

Check #	Name	Check Date	Amount	Check Total
	TIRE LABOR		95.00	
				95.00
12316	MONTEREY BAY OFFICE PRODUCTS	1/29/2014		
	Printer Maintenance		311.80	
	Printer Maintenance		85.00	
	Printer Maintenance		85.00	
				481.80
12317	MONTEREY COUNTY BUSINESS COUNCIL	1/29/2014		
	2014 ANNUAL MEMBERSHIP		2,000.00	
				2,000.00
12318	NEXIS PARTNERS, LLC	1/29/2014		
	RENT & COMMON AREAS ADM BLDG FEBRUARY 2014		1,515.00	
	RENT & COMMON AREAS ADM BLDG FEBRUARY 2014		7,194.00	
				8,709.00
12319	OFFICE DEPOT	1/29/2014		
	Office Supplies		36.15	
	Office Supplies		64.51	
	Office Supplies		59.29	
	Office Supplies		80.35	
	Office Supplies		1,061.53	
	Office Supplies		81.93	
	Office Supplies		137.59	
	Office Supplies		63.96	
	Office Supplies		154.41	
	Office Supplies		8.62	
	Office Supplies		33.43	
	Office Supplies		41.03	
	Office Supplies		43.92	
	Office Supplies		17.33	
				1,884.05
12320	**Void**	1/29/2014		
			0.00	
				0.00
12321	ONHOLD EXPERIENCE	1/29/2014		
	On Hold Service		207.00	
				207.00
12322	PITNEY BOWES - POSTAGE	1/29/2014		
	Postage		1,000.00	
				1,000.00
12323	PURE WATER BOTTLING	1/29/2014		
	BOTTLED WATER DELIVERIES		53.00	
	BOTTLED WATER DELIVERIES		23.75	
	BOTTLED WATER DELIVERIES		69.92	
				146.67
12324	QUINN COMPANY	1/29/2014		
	SS TS VEHICLE SERVICE AND REPAIRS		121.48	
	SS TS VEHICLE SERVICE AND REPAIRS		294.78	
	SS TS VEHICLE SERVICE AND REPAIRS		924.31	
	SS TS VEHICLE SERVICE AND REPAIRS		340.00	
				1,680.57
12325	RBF CONSULTING	1/29/2014		
	JC SURVEYING SERVICES		4,027.50	
				4,027.50

Salinas Valley Solid Waste Authority
Checks Issued Report for 1/1/2014 to 1/31/2014

Check #	Name	Check Date	Amount	Check Total
12326	RECOLOGY WASTE SOLUTIONS, INC JC DIV ASST FEE & MATERIAL FEES JC LANDFILL OPS & EXTENDED HRS JC LANDFILL OPS & EXTENDED HRS JC DIV ASST FEE & MATERIAL FEES	1/29/2014	8,154.00 2,706.00 163,034.00 469.21	174,363.21
12327	REPUBLIC SERVICES #471 96 GALLON GARBAGE CART SERVICE	1/29/2014	64.87	64.87
12328	SCALES UNLIMITED SCALES MAINTENANCE SCALES MAINTENANCE	1/29/2014	940.00 970.00	1,910.00
12329	SCS ENGINEERS Engineering Services	1/29/2014	550.00	550.00
12330	SCS FIELD SERVICES ALL SITES GRDWTR MONITORING SERVICES ALL SITES GRDWTR MONITORING SERVICES ALL SITES GRDWTR MONITORING SERVICES NON ROUTINE - CH, LR, JC ECS NON ROUTINE - CH, LR, JC ECS ALL SITES GRDWTR MONITORING SERVICES NON ROUTINE - CH, LR, JC ECS ALL SITES GRDWTR MONITORING SERVICES ALL SITES GRDWTR MONITORING SERVICES	1/29/2014	1,344.00 1,400.00 4,712.00 620.00 1,006.50 2,195.00 981.00 3,539.00 3,691.00	19,488.50
12331	SMOKEY KEY SERVICE Supplies	1/29/2014	43.20	43.20
12332	STURDY OIL COMPANY TRUCK & TRAILER SUPPLIES TRUCK & TRAILER SUPPLIES & STEAM WASH	1/29/2014	177.60 520.00	697.60
12333	T. M. FITZGERALD & ASSOCIATES 200 Recycling Containers	1/29/2014	3,032.59	3,032.59
12334	THOMAS M BRUEN LEGAL SERVICES	1/29/2014	9,060.47	9,060.47
12335	VERIZON WIRELESS SERVICES, LLC Cell Phone Service	1/29/2014	118.61	118.61
12336	VISION RECYCLING INC C & D OUTSIDE GRINDING & MISC SERVICES	1/29/2014	6,957.50	6,957.50
12337	WASTE MANAGEMENT INC BFI WASTE DELIVERED TO MADISON JOLON ROAD OPERATIONS	1/29/2014	6,994.52 57,779.10	64,773.62
12338	WESTERN EXTERMINATOR COMPANY JC STORAGE CONTAINER/SHOP, SSTS RODENT CONTROL JC STORAGE CONTAINER/SHOP, SSTS RODENT CONTROL	1/29/2014	53.00 55.00	

Salinas Valley Solid Waste Authority
Checks Issued Report for 1/1/2014 to 1/31/2014

Check #	Name	Check Date	Amount	Check Total
	JC STORAGE CONTAINER/SHOP, SSTS RODENT CONTROL		228.00	
				336.00
12339	WILLDAN FINANCIAL SERVICES BOND CONTINUING DISCLOSURE INFORMATION	1/29/2014	1,600.00	
				1,600.00
12340	WRIGHT EXPRESS FINANCIAL SERVICES CORPORATION	1/29/2014		
	Vehicle Fuel		1,314.22	
	Vehicle Fuel		137.60	
	Vehicle Fuel		169.27	
	Vehicle Fuel		96.68	
				1,717.77
17540536056	CA STATE BOARD OF EQUALIZATION	1/24/2014		
	INTEGRATED WASTE MGMT FEES OCT - DEC 2013		57,447.60	
	INTEGRATED WASTE MGMT FEES OCT - DEC 2013		27,844.60	
				85,292.20
DFT2014716	WAGEWORKS	1/27/2014		
	FSA MONTHLY ADMIN FEES DEC 2013		6.00	
	FSA MONTHLY ADMIN FEES DEC 2013		12.00	
	FSA MONTHLY ADMIN FEES DEC 2013		8.00	
	FSA MONTHLY ADMIN FEES DEC 2013		6.00	
	FSA MONTHLY ADMIN FEES DEC 2013		6.00	
	FSA MONTHLY ADMIN FEES DEC 2013		12.00	
				50.00
	Subtotal			<u>601,771.73</u>
	Payroll Disbursements			250,001.74
	Grand Total			<u><u>851,773.47</u></u>



SalinasValleyRecycles.org


SALINAS VALLEY SOLID WASTE AUTHORITY

Report to the Executive Committee

ITEM NO. 3


Finance Manager/Controller-Treasurer

n/a
Legal Counsel


General Manager/CAO

Date: March 5, 2014

From: Roberto Moreno, Finance Manager

Title: A Resolution Approving Service Fees Effective July 1, 2014 for Recycling, Resource Recovery, and Disposal at Authority Landfills and Transfer Stations and Administrative Services

RECOMMENDATION

Staff recommends the Executive Committee support this item.

STRATEGIC PLAN RELATIONSHIP

This is a routine operational item. It does not directly relate to the Board's Strategic Plan.

FISCAL IMPACT

Approval of the proposed rate schedule will result in a decrease of \$334,500 in solid waste tipping fee revenue due to an anticipated slight decrease in tonnage with no offsetting rate increase. The \$3.00 per ton increase in the Salinas Transportation Surcharge will result in a revenue increase of \$228,800.

DISCUSSION & ANALYSIS

No increase in tipping fees or AB939 fees

No increase in tipping fees or AB939 fees is proposed for FY 2014-15 in accordance with the agreement with the County Board of Supervisors which approved the refunding revenue bonds.

Increase of \$3.00 per ton in Salinas Transportation Surcharge

The only proposed increase is a \$3.00 per ton increase in the Salinas Transportation Surcharge fee charged to Republic Services of Salinas to help defray the cost of transporting their waste from Salinas to Johnson Canyon Landfill. This will bring their transportation surcharge to \$14.00 per ton. This is still a favorable rate in comparison to the \$19.89 per ton the Authority pays Waste Management to transport overflow waste from Madison Lane Transfer Station. At the October 2012 Board Retreat, the Board agreed to raise the Salinas Transportation Surcharge \$3.00 per ton annually until Republic is paying the full cost of transporting their waste to Johnson Canyon landfill.

Reallocation of AB939 Fee

The total AB939 fee of \$1,731,980 is not proposed to increase as mentioned above. However, each member agency's share of the AB939 fee is proposed to change slightly in accordance with the Board adopted methodology for annual allocation of the AB939 fee, whereby each franchise hauler's share is based on the previous year's landfilled tonnage. The 2013-14 AB939 fee allocation was based on 2011-12 landfilled tonnage. The 2014-15

AB939 fee should therefore be allocated based on 2012-13 landfilled tonnage. The table below shows the minor changes in allocation between the 2013-14 and 2014-15 fiscal years. Again, there is no change in the net fees collected for the Authority, only changes in how the costs are allocated between member agency franchise haulers.

Franchise Hauler	2011-12		FY 2013-14		2012-13		FY 2014-15		Increase / (Decrease)
	Tons Landfilled	Percent	Annual AB939 Fee		Tons Landfilled	Percent	Annual AB939 Fee		
Republic Services	91,753	63.3%	\$ 1,096,269		93,236	64.4%	\$ 1,115,134		\$ 18,865
WM - Unincorp.	30,930	21.3%	\$ 369,550		29,130	20.1%	\$ 348,407		\$ (21,143)
TCD - Soledad	6,147	4.2%	\$ 73,450		6,294	4.3%	\$ 75,278		\$ 1,828
WM - King City	7,627	5.3%	\$ 91,133		7,497	5.2%	\$ 89,665		\$ (1,468)
TCD - Greenfield	5,702	3.9%	\$ 68,124		5,809	4.0%	\$ 69,477		\$ 1,353
TCD - Gonzales	2,800	1.9%	\$ 33,454		2,844	2.0%	\$ 34,019		\$ 565
Total	144,959	100.0%	\$ 1,731,980		144,810	100.0%	\$ 1,731,980		\$ -

The proposed allocation of the AB939 fee based on FY 2012-13 tonnage will have a minor impact on the franchise haulers.

BACKGROUND

On November 21, 2013 the Authority agreed as follows:

To the extent permitted by law and barring unforeseen exigent circumstances, the Authority shall not raise rates or impose new rates for the disposal or processing of waste of any kind at any facilities owned, controlled, managed or leased by the Authority (including without limitation tipping fees or AB 939 fees) through and including June 30, 2015, without the express approval of the County's representatives to the Authority's Board of Directors present at the meeting, other than implementation of the previously approved rate increase effective July 1, 2013;

The preliminary budget presented to the Board on February 20, 2014 reflects the proposed rates for FY 2014-15. A Public Hearing is scheduled for March 20, 2014 to consider the proposed rates.

ATTACHMENT(S)

1. Resolution and Fee Schedule

RESOLUTION NO. 2014 –

A RESOLUTION OF THE SALINAS VALLEY SOLID WASTE AUTHORITY APPROVING SERVICE FEES EFFECTIVE JULY 1, 2014 FOR RECYCLING, RESOURCE RECOVERY, AND DISPOSAL AT AUTHORITY LANDFILLS AND TRANSFER STATIONS AND ADMINISTRATIVE SERVICES

WHEREAS the Board of Directors of the Salinas Valley Solid Waste Authority held a public hearing on March 20, 2014 to review the Disposal Fees and Rates for FY 2014-15; and

WHEREAS a \$3.00 per ton increase in the Salinas Transportation Surcharge is necessary to cover the cost of transporting Republic Services waste from Salinas to Johnson Canyon Landfill; and

WHEREAS the Authority Board previously agreed to not increase tipping fee or AB939 Fees.

NOW THEREFORE BE IT RESOLVED by the Board of Directors of the Salinas Valley Solid Waste Authority that the Disposal Fees and Rates Schedule attached hereto as "Exhibit A" is hereby approved to become effective July 1, 2014.

BE IT FURTHER RESOLVED that the General Manager/CAO is hereby authorized to make adjustments to the Disposal Fees and Rates Schedule on a case by case basis for recyclable/diverted materials where there is a clear benefit to the Authority or when there is an instance of a situation not covered by the Disposal Fees and Rates Schedule. In such instances, the Board will be notified at the next scheduled meeting.

PASSED AND ADOPTED by the Board of Directors of the Salinas Valley Solid Waste Authority at a regular meeting duly held on the 20th day of March 2014, by the following vote:

AYES: BOARD MEMBERS:

NOES: BOARD MEMBERS:

ABSENT: BOARD MEMBERS:

ABSTAIN: BOARD MEMBERS:

Fernando Armenta, President

ATTEST:

Elia Zavala, Clerk of the Board

EXHIBIT A
SALINAS VALLEY SOLID WASTE AUTHORITY

DISPOSAL FEES AND RATES
Effective July 1, 2014

	Current Fee or Rate	Proposed Changes
<u>LANDFILLED MATERIALS</u>		
<u>Franchise Haulers (Class III Solid Waste)</u>	\$ 67.00	Per Ton
<u>Self Haul Loads at all Sites</u>		
Minimum charge per load (up to 500 lbs.)	\$ 15.00	Per Load
Loads weighing between 501 and 999 lbs.	\$ 30.00	Per Load
Loads weighing 1,000 lbs. and above	\$ 67.00	Per Ton
<u>Fumigation or Mulch Plastic/Drip Tape - Johnson Canyon only</u>		
Loads weighing 500 lbs. or less	\$ 18.75	Per Load
Loads weighing between 501 and 999 lbs.	\$ 37.50	Per Load
Loads weighing 1,000 pounds and above	\$ 75.00	Per Ton
<u>Nonfriable Asbestos</u>	\$ 90.00	Per Ton
Up to 1 cubic yard w/o pre-approval) wetted and double bagged		
Note: Usefulness and suitability of materials is subject to scale house personnel's discretion.		
<u>Special Handling Charge (in addition to cost per ton) - Johnson Canyon only</u>		
Remediated Soil Handling	\$ 100.00	Each
Certified Burials (under 20' trailer)	\$ 105.00	Each
Certified Burials (20' and over trailer)	\$ 210.00	Each
<u>Tarps</u>	\$ 10.00	Each
Untarped Loads	Additional 50% of the Required Fee	
<u>Compost Bins</u>	\$ 49.95	Each
<u>*Soil (Loaded by the Customer) - Johnson Canyon</u>	\$ 1.00	Per Cubic Yard Up to 500 C.Y.

AB939 Fees (Total Remains same as 2013-14)

AB939 Fees Total \$ 1,731,980 Annual

	2012-13		Annual	Monthly
	Tons Landfilled	Percent		
Fee is charged to franchise haulers based on prior year tonnage: Fee allocation is as follows:				
Republic Services of Salinas	93,236	64.4%	\$ 1,115,134	\$ 92,928
Waste Management - Unincorporated area	29,130	20.1%	\$ 348,407	\$ 29,034
Tri-Cities - Soledad	6,294	4.3%	\$ 75,278	\$ 6,273
Waste Management - King City	7,497	5.2%	\$ 89,665	\$ 7,472
Tri-Cities - Greenfield	5,809	4.0%	\$ 69,477	\$ 5,790
Tri-Cities - Gonzales	2,844	2.0%	\$ 34,019	\$ 2,835
	144,810	100%	\$ 1,731,980	\$ 144,332

EXHIBIT A
SALINAS VALLEY SOLID WASTE AUTHORITY

DISPOSAL FEES AND RATES
 Effective July 1, 2014

	Current Fee or Rate	Proposed Changes
<u>SOURCE SEPARATED DIVERTIBLE MATERIALS</u>		

<u>Cardboard</u>	No Charge	
<u>Recyclable plastic and glass containers, aluminum and paper</u>	No Charge	
<u>Metal</u>	No Charge	
<u>Construction and Demolition materials</u>		
Mixed Dirty	\$ 58.00	Per Ton
Minimum charge per load (up to 500 lbs.)	\$ 14.50	Per Load
Loads weighing between 501 and 999 lbs.	\$ 29.00	Per Load
Loads weighing 1,000 lbs. and above	\$ 58.00	Per Ton
<u>Mattresses and box springs</u>	\$ 15.00	Each
<u>Greenwaste and Wood</u>		
Minimum charge up to 500 lbs.	\$ 10.00	Per Load
Loads weighing between 501 and 999 lbs.	\$ 15.00	Per Load
Loads weighing 1,000 lbs. and above	\$ 36.00	Per Ton
Wood Stumps (3 feet and over in diameter) & Tree limbs	\$ 67.00	Per Ton
<u>Soil and Aggregate (Johnson Canyon Landfill only)</u>		
Clean Fill Dirt (up to 10 c.y. without pre-approval)	\$ 10.00	Per Ton
Asphalt (suitable for road base)	\$ 1.00	Per Ton
Concrete (suitable for road base - no rebar)	\$ 1.00	Per Ton
Concrete with rebar/pipe	\$ 10.00	Per Ton
<u>Biosolids - subject to pre-approval (Johnson Canyon Landfill only)</u>	\$ 28.00	Per Ton
<u>Tires (without rims only)</u>		
Auto/Light Truck Tires less than 42"	\$ 2.00	Each
Auto/Light Truck Tires more than 42"	\$ 10.00	Each
Commercial Tires	\$ 75.00	Each
Equipment Tires	\$ 150.00	Each
Altered Tires (split, sliced, quartered)	\$ 67.00	Per Ton

HOUSEHOLD HAZARDOUS WASTE AT COLLECTION FACILITIES

All commercial customers
 Households outside the Authority's service area
 Minimum charge \$1.50 per lb.

Absorbent	\$ 1.50	Per Lb.
Acids/Bases	\$ 1.50	Per Lb.
Aerosols	\$ 1.25	Per Can

EXHIBIT A
SALINAS VALLEY SOLID WASTE AUTHORITY

DISPOSAL FEES AND RATES
Effective July 1, 2014

	Current Fee or Rate	Proposed Changes
Antifreeze	\$ 1.50 Per Lb.	
Environmentally Hazardous Substances (Reactive and Solvents)	\$ 5.00 Per Lb.	
Flammable Liquids	\$ 1.50 Per Lb.	
Flammable Sludge	\$ 1.50 Per Lb.	
Motor Oil - contaminated	\$ 1.50 Per Lb.	
Oil Filters (autos and small trucks)	\$ 1.50 Each	
Oil Filters (trucks and equipment)	\$ 10.00 Each	
Oxidizers	\$ 1.50 Per Lb.	
Paint and Paint Related Materials	\$ 1.50 Per Lb.	
Pesticides	\$ 1.50 Per Lb.	
HHW Clean-up Service Fee	\$ 75.00 Hour	
HHW Sorting Fee	\$ 25.00 Per customer	
<u>Appliances and Air Conditioners</u>		
Without refrigerant	No Charge	
With refrigerant	\$ 15.00 Each	
<u>Gas Cylinders (Propane, helium, fire extinguishers only)</u>		
Must be empty with valve open		
1 liter	\$ 1.50 Each	
5 gallons	\$ 8.00 Each	
<u>Sharps Disposal (non-commercial only)</u>		
Used needles and lancets (in an approved container)	No Charge	
<u>Sharps Containers (non-commercial only)</u>		
3 Quart Container	\$ 5.00 Each	

UNIVERSAL WASTE AT HHW COLLECTION FACILITIES

Minimum charge \$1.50 per pound

Batteries	
Alkaline or Rechargeable A, AA, AAA, B, C, D and 6 volt Nickel-Cadmium, Lithium, Silver Oxide-Hydride Cells, Lead Gel Cells, Nickel-Metal, and Lithium	\$ 1.50 Per Lb.
UPS/Automobile and Light Truck Batteries	No Charge
CRT (televisions and computer monitors)	No Charge
Cell Phones	No Charge
Computers, keyboard and printers	No Charge

EXHIBIT A
SALINAS VALLEY SOLID WASTE AUTHORITY

DISPOSAL FEES AND RATES
 Effective July 1, 2014

	Current Fee or Rate	Proposed Changes
Copiers, mimeographs, facsimile machines	No Charge	
Compact Fluorescent Bulbs	\$ 1.50 Per Lb.	
Fluorescent Lamps	\$ 1.50 Per Lb.	
Halogen, High Pressure Sodium Tubes	\$ 1.50 Per Lb.	
Fluorescent Ballasts (PCB)	\$ 2.00 Per Lb.	
Kitchen appliances: microwaves, toaster, toaster ovens	No Charge	
Mercury	\$ 7.00 Per Lb.	
Mercury thermostats, thermometers or switches	\$ 1.00 Each	
Toner, developer, ink cartridges (office use)	\$ 1.00 Per Lb.	
Toner and developer (industrial use)	\$ 1.50 Per Lb.	

ADMINISTRATIVE & SPECIAL FEES

Salinas Transportation Surcharge (applies only to Salinas Franchise Waste)	\$ 11.00 Per Ton	\$ 14.00
Agenda Packets for Board or Executive Committee	\$ 116.00 Annually	
Agendas Only	\$ 26.00 Annually	
Agendas Only for Public Agencies	\$ 18.00 Annually	
Reproduction of Public Records	\$ 0.10 Per Page	
Copies of Weight Tags	\$ 20.00 Each	
Returned Check Fee	\$ 25.00 Each	
Finance Charge on accounts 30+ Days Past Due	1.5% per mo., 18% annually	
Media duplication for disks, cds, tapes	Actual Cost \$5.00 Min.	Each
Plans & Specifications for Construction Projects	Actual Cost \$15.00 Min.	Per Set
Full Size Plans for Construction Projects	Actual Cost \$15.00 Min	Per Set



SalinasValleyRecycles.org
SALINAS VALLEY SOLID WASTE AUTHORITY

Report to the Executive Committee

ITEM NO. 4


Finance Manager/Controller-Treasurer

N/A
Legal Counsel


General Manager/CAO

Date: March 5, 2014
From: Cesar Zuniga, Operations Manager
Title: A Resolution Approving the Implementation Plan for Authority Staff to Provide Operation and Diversion Services at the Johnson Canyon Landfill

RECOMMENDATION

Staff requests that the Executive Committee recommend approval of the Resolution to the Authority Board of Directors for execution of the Implementation Plan for Authority operations at the Johnson Canyon Landfill and direct staff to reject all proposals received from vendors.

STRATEGIC PLAN RELATIONSHIP

The recommended action helps support the Authority's Goal to *Reduce Costs and Improve Services at the Johnson Canyon Landfill*.

FISCAL IMPACT

The current budget includes \$2,945,300 for operations at the Johnson Canyon Landfill being performed under contract by Recology. The following Implementation Plan will result in a 2015 budget that is about \$2,874,524. As a reminder, this budget is \$476,000 per year less than the lowest of the two private sector proposals discussed during the February 2014 Board meeting. The Implementation Plan includes a task to revise the FY2014/2015 budget showing that the work will be managed and performed by SVSWA employees. The transition period from the contractor to SVSWA concludes on December 31, 2014.

DISCUSSION & ANALYSIS

The Implementation Plan includes the following major tasks.

Hiring Process – March 2014 to November 2014

As part of this process, the Board will first be presented with the following items for its consideration:

- Revised Personnel Allocation Plan
- Revised Classification Plan
- Revised Equipment Operator Job Descriptions

Once these items are approved, staff will initiate the employee selection process. As discussed at the February 20, 2014 meeting, the employee selection process will use the same process as when the Authority took over operations at Sun Street Transfer Station on January 1, 2008 and for the scale house attendants on September 1, 2009. That process includes holding a Job Fair to promote the Authority as a local employer and assist candidates from Recology with the application and hiring process to make sure they fully understand the Authority benefits and how to make the best impression during our

recruitment process. The process includes having the Authority's Human Resources/Organizational Development Manager available to answer questions and assist with the application process to all existing Recology employees that wish to work for the Salinas Valley Solid Waste Authority. The Authority hiring process also includes an initial internal recruitment for qualified individuals.

Equipment Procurement and Maintenance Agreement Process – March 2014 to November 2014

As part of this process, the Board will be presented with the following items for its consideration:

- Equipment Procurement Budget. This plan will include a 5-year financing and replacement schedule.
- Equipment Maintenance and Fueling Plan

Once these plans are approved, staff will solicit equipment bids and proposals to service the equipment. The bid results and equipment maintenance proposals will then be presented to the Board for consideration.

Transition Plan – March 2014 to November 2014

While the above work is being developed, staff will be working on the following necessary items. Some of these items will require Board consideration, which are noted as appropriate.

- Revise Operations Budget (requires Board approval)
- Operations Plan and Schedule
- Annual Solid Waste Fill Plan
- Revise Stormwater Pollution Prevention Plan
- Revise Health and Safety Plan
- Revise Safety Program
- Revise Illness & Injury Prevention Plan
- Equipment Training Plan
- Augmented Safety Program

BACKGROUND

On February 20, 2014, the proposal results from vendors and SVSWA staff were presented to the Board for review and direction. After some discussion, the Board of Directors instructed staff to develop a plan to start the Johnson Canyon Landfill operations on January 1, 2015 utilizing Authority staff and resources.

ATTACHMENT(S)

1. Resolution
2. Exhibit A – Implementation Schedule

**RESOLUTION NO. 2014-
A RESOLUTION OF THE SALINAS VALLEY SOLID WASTE AUTHORITY
APPROVING THE IMPLEMENTATION PLAN FOR AUTHORITY STAFF TO PROVIDE
OPERATIONS AND DIVERSION SERVICES AT THE JOHNSON CANYON LANDFILL**

WHEREAS, the 2002 contract for operation of the Johnson Canyon Landfill with Recology Environmental Solutions expires on December 31, 2014; and

WHEREAS, on February 20, 2014 the Board of Directors considered the responses received to the Request for Proposals for landfill operations; and

WHEREAS, based on the substantial cost savings and the ability of Authority staff to accomplish the Scope of Services presented in the Request for Proposals, the Authority Board directed staff to develop an Implementation Plan to transition between the current contracted operator and future operations by Authority staff on January 1, 2015.

THEREFORE, BE IT RESOLVED BY THE BOARD OF DIRECTORS OF THE SALINAS VALLEY SOLID WASTE AUTHORITY that the Chief Administration Officer or his delegate is hereby authorized and directed for and on behalf of the Salinas Valley Solid Waste Authority to execute the Implementation Plan outlined in "Exhibit A" in order to commence operation of the Johnson Canyon Landfill on January 1, 2015.

BE IT FURTHER RESOLVED BY THE BOARD OF DIRECTORS OF THE SALINAS VALLEY SOLID WASTE AUTHORITY that the Chief Administration Officer is hereby authorized to reject all proposals received in response to the Request for Proposals.

PASSED AND ADOPTED by the Board of Directors of the Salinas Valley Solid Waste Authority this 20th day of March 2014 by the following vote:

AYES: BOARD MEMBERS:

NOES: BOARD MEMBERS:

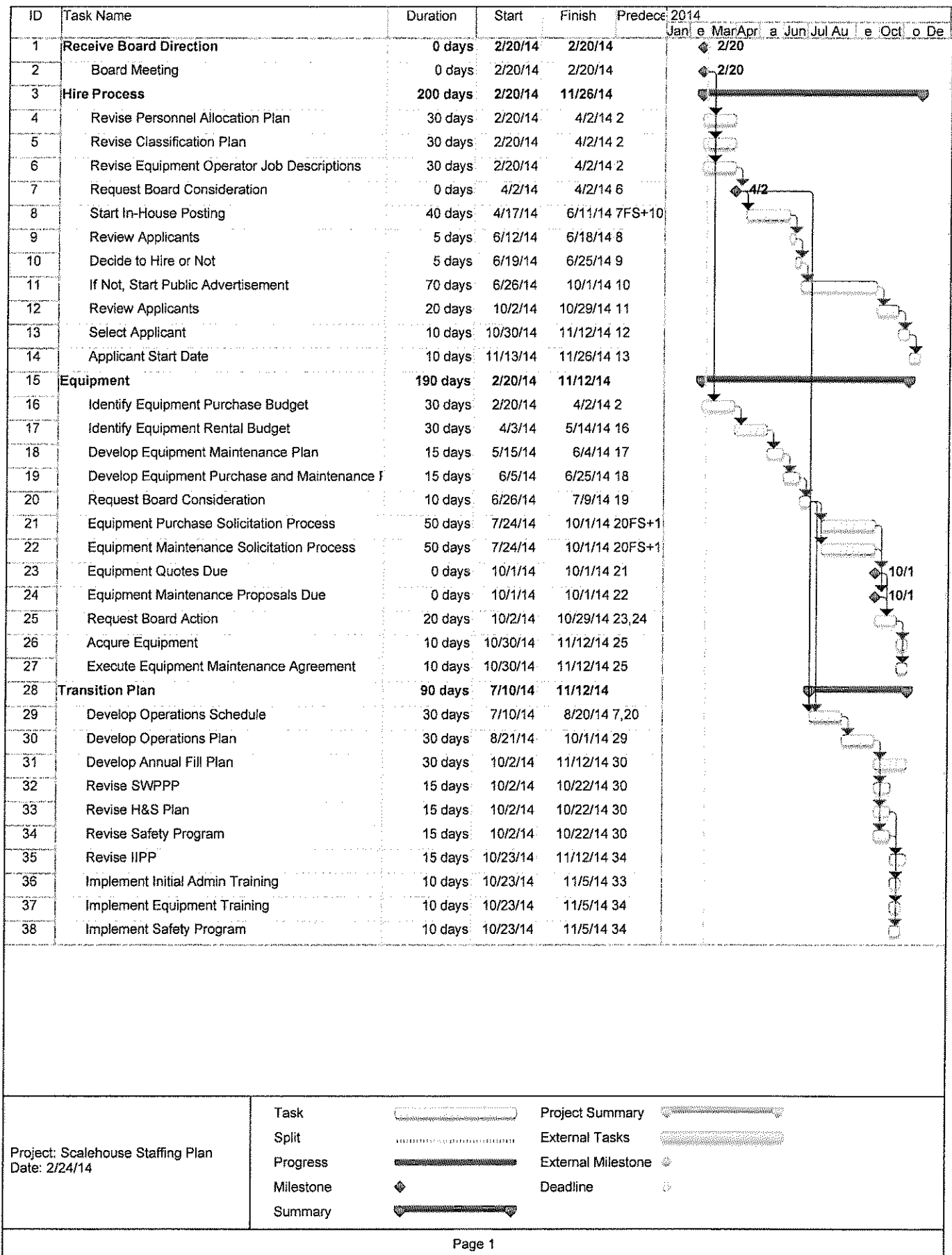
ABSENT: BOARD MEMBERS:

ABSTAIN: BOARD MEMBERS:

ATTEST:

Elizabeth Silva, President

Elia Zavala, Clerk of the Board





SalinasValleyRecycles.org

SALINAS VALLEY SOLID WASTE AUTHORITY

Report to the Executive Committee

Date: March 5, 2014
From: Rose Gill, Administrative Manager
Title: Johnson Canyon Roadway Improvements Update

ITEM NO. 5

N/A

Finance Manager/Controller-Treasurer

N/A

General Counsel

N/A

General Manager/CAO

**A PRESENTATION WILL BE GIVEN
AT THE MEETING**

SVSWA Agenda Items - View Ahead

Item No. 6

2014						
	20-Mar	17-Apr	15-May	19-Jun	31-Jul	21-Aug
1	New Employee & Promotions	Minutes	Minutes	Minutes	SIX-MONTH STRATEGIC PLANNING RETREAT	Minutes
2	Minutes	Claims/Financials (EC)	Claims/Financials (EC)	Claims/Financials (EC)		Claims/Financials (EC)
3	Claims/Financials (EC)	QTE March Cash & Investments	QTE March Tonnage & Diversion Reports	FY Investment Policy (EC)		QTE June Cash & Investments (EC)
4	Strategic Plan Monthly Progress Report	Admin Procedures Manual (sp1)	Strategic Plan Monthly Progress Report	CH Closure Project Completion (sp1)	Reprt on Feedback for Generating Revenue from C/Ls (sp3)	QTE June Tonnage Report
5	Diversion Report Including Private Recycle data (sp3)	Strategic Plan Monthly Progress Report	Award Bid for Tire Derived aggregate	In-house ECS Ops Plan (sp1)		Annual Tonnage & Diversion Performance Report
6	Increased C&D Diversion Plan (sp2)	Financial Policy Updates	Award bid for LFG Pipe	USDA Digester Project -75% DG Contrib Rpt (sp3)		
7	Public Hearing FY 14-15 Rates (EC)	Consultant Selectn Process -Revenue Opprtunities (sp3)	AdManor PSA for Marketing Services	CAG Sites Recommendtn for MRC/Autoclave		
8	Recognition of Salinas Adult School	Waste Managmnt Transfer Services 6-month Ext	Award contract for JC flare replacement	Strategic Plan Monthly Progress Report		
9	Recology 1-yr Extension		Hope Services Materials Process & Litter Abatement	Report on Process to move MRC/Autoclave Project thru ER (sp3)		
10	JC Roadway Improvements (EC)		21st Century Amend 1 for HHW Services	Report on Funding Commitment for Regional Landfill Route (sp3)		
11	JC Landfill Ops Plan (sp3) (EC)		RecycleRama Contract	Viability Report of Compost Operation at JC Landfill (sp3)		
12	MOUs (EC)		FY 2014-15 Budget (EC)	Report on Ideas for Cost Saving Opportunities (sp3)		
13			Final Salinas Area MRC site(s) to study (sp2)			
14			New Public & Stakeholder Outreach Ideas (sp3)			
			Expanded/Enhanced Student Recycling Education Plan			

Consent
Presentation
Consideration
Closed Session
[Other] (Public Hearing, Recognition, Informational, etc.)
(EC) Executive Committee
(sp) Strategic Plan Item