

## **NOTICE OF PREPARATION OF AN ENVIRONMENTAL IMPACT REPORT**

### **for the Long Term Facility Needs Study Project**

**SUBJECT.** This is a Notice of Preparation (NOP) of an Environmental Impact Report (EIR) for the Long Term Facility Needs Study (Project). The Salinas Valley Solid Waste Authority (Authority) will be the Lead Agency and will prepare an EIR under the California Environmental Quality Act (CEQA) for the proposed Project. The Authority requests input on the scope and content of the environmental analysis.

**PROJECT NAME.** Long Term Facility Needs Study

**PROJECT BACKGROUND.** The Authority is responsible for resource recovery, solid waste transfer and disposal needs for a significant portion of unincorporated Monterey County and the cities of Gonzales, Greenfield, King City, Salinas and Soledad. The Project is a proposed course of actions to enable the Authority to meet increasingly exacting and challenging requirements of State law to achieve maximum diversion of waste from going to landfills.

#### *Regulatory Framework and Requirements*

In 1989, the State adopted the California Integrated Waste Management Act (AB 939), which requires local jurisdictions to implement a comprehensive solid waste management program to achieve 25 percent diversion of all solid waste from disposal by January 1, 1995, and 50 percent diversion by January 1, 2000.

In 2011, the Legislature enacted AB 341, a new broader approach to the management of solid waste, which requires mandatory commercial recycling, and establishes a new statewide goal of 75 percent recycling. The goal is to be accomplished through greater source reduction, recycling, and composting by 2020. AB 341 requires that recycling services are arranged for commercial waste generators of more than 4 cubic yards of waste per week, and multi-family residences of five or more units. The definition was later clarified in 2012 under SB 1018 to include all businesses that generated 4 cubic yards or more of waste a week, rather than more than 4 cubic yards a week.

In 2014, AB 1826 was signed into law, which requires businesses to recycle their organic waste on and after April 1, 2016, depending on the amount of waste they generate per week. AB 1826 also requires local jurisdictions to implement organic waste recycling programs to divert this waste away from landfills beginning on January 1, 2016.

Beginning August of 2017, AB 876 requires counties and regional agencies to estimate of the amount of organic waste in their area over a 15-year period. AB 876 also requires an estimate of how much additional organic waste recycling facility capacity will be needed to process that material, and for counties and regional agencies to identify locations for new or expanded facilities.

# Notice of Preparation

## *Authority Response to State Law Mandates and Regulatory Requirements*

The Authority has been considering a new site for a permanent materials recovery and transfer station that would serve the existing and future needs of its members and satisfy State law mandates described above. A number of sites have been previously identified and evaluated, and the Authority has determined that an EIR should be prepared in compliance with Title 14, Section 15161 of the California Code of Regulations (CEQA Guidelines) to identify the potential for significant and unavoidable environmental impacts of alternative Project operations and site locations.

**DUE DATE FOR COMMENTS.** Please respond with written comments regarding the scope and the content of the proposed EIR as it may relate to your agency's area of statutory responsibility or your areas of concern or expertise by **May 31, 2017**. Further information on the review period and where to submit your comments is provided at the end of this document.

**PROJECT LOCATION.** The Project could involve development of facilities at one or more locations within Monterey County. Each location would have a combination of unique operations. The Authority believes that the scenarios advanced for evaluation in this EIR present the best potential alternatives based on site characteristics, potential benefits to operations, environmental and community constraints, and information and experience developed and considered from previous studies and evaluations.

Sites proposed for evaluation in the EIR include (Figure 1):

- **Harrison Road** – A parcel previously in agricultural use, but currently fallow, and designated for future commercial development in unincorporated Monterey County just north of Salinas, bounded roughly by Harrison Road (east) and US 101 (west), north of the Sala Road interchange.
- **Sun Street Transfer Station** – The Authority's existing transfer facility at 139 Sun Street in Salinas.
- **Johnson Canyon Landfill** – An existing landfill located on Johnson Canyon Road 2 miles east of Gonzales and about 15 miles south of Salinas.
- **Crazy Horse Landfill** – A closed landfill located at 350 Crazy Horse Canyon Road, about 1 mile from US 101 in Prunedale, about 9 miles north of Salinas.
- **Monterey Regional Waste Management District** - An existing regional landfill and materials recovery facility located at 14201 Del Monte Blvd about 2 miles north of Marina and 3 miles south of Castroville.
- A no project alternative will also be evaluated. This may involve minor expansion of the Sun Street facility with the potential for select tonnage transferred to the Monterey Regional Waste Management District (MRWMD). The MRWMD facility is the Monterey Peninsula's regional solid waste, recycling, and processing facility located at 14201 Del Monte Boulevard, about 1.4 miles west of Highway 1 just outside the community of Marina.

**PROJECT DESCRIPTION.** The Project involves the construction and operation of a permanent municipal solid waste materials recovery center consisting of one or more facility locations, which would allow for the Authority to implement State law mandates to increase recycling and diversion activities. The

## Notice of Preparation

Project would facilitate the relocation and ultimate closure of the Authority's Sun Street Transfer Station in the City of Salinas. It will also help the Authority meet its objectives in complying with State law to: substantially reduce municipal solid waste being disposed of at the Authority's landfill; increase the recycling and reuse of municipal solid waste; minimize haul distances for waste collection vehicles and reduce vehicle miles travelled and GHG emissions; minimize land use conflicts and environmental impacts; while continuing to provide municipal solid waste recovery and disposal services to the jurisdictions served by the Authority.

The Draft EIR is anticipated to evaluate five representative alternative build scenarios that are summarized in Table 1. Each of these scenarios involves different facility locations, as noted above, and combinations of solid waste material recovery and processing, both new and existing. Facility layout plans and operations will be developed and described in the Draft EIR, but the following summarizes the primary components (not all of the following processes would be at each site; refer to Table 1 for more detail):

- **Commercial and public scales.** The transfer station and materials recovery facilities would have a truck scale facility at the entrance to the site, used for purposes of weighing the incoming materials, confirming contents, and directing the drivers to the appropriate facilities, or exit.
- **Transfer station/tipping floor.** The transfer station is where wastes are received and initially sorted, and then moved to the next processing step or loaded onto transfer trucks that deliver the materials to another location. A tipping floor refers to a designated area or building that serves as the first stop where waste collection trucks or vehicles arrive and refuse is "tipped out" onto the floor. Front end loaders may be used to push the waste into areas for initial sorting or onto larger trucks for transfer to other facilities.
- **Materials recovery center.** This large building would house the incoming material tipping floor and the materials recovery center with waste processing, where materials are sorted or directed as needed for treatment and processing.
- **Global Organics Energy Clean Fiber and Organics Recovery System.** This will consist of a proprietary system that is designed to process fiber material from the incoming mixed waste stream, using heat and biodegradation to recover materials that can be reused or reprocessed. This would be located in the materials recovery center.
- **Household hazardous waste processing.** This would consist of a collection facility that would receive, identify, store, and process household hazardous wastes delivered by the public, businesses, and other waste generators.
- **Recycling area and drop-off area.** The recycling drop-off would be an area for the public to unload their recyclables. This would be an area for the self-haul public to bring their recyclables, unload, and separate them into boxes, bins and bunkers.
- **Administrative offices, staff facilities, and vehicle maintenance.** The administration building would include offices, washrooms, locker rooms, and a break room for staff. The vehicle maintenance building would provide for the maintenance and repair of vehicles and other equipment on site. This building or facility may also store maintenance equipment needed by the staff for operation and care of the facility.

# Notice of Preparation

**Table 1 - CEQA Study Scenarios**

Scenario #	Scenario Description	Proposed Location(s)
1	<b>Transfer Station/Materials Recover Center/Clean Fiber Recovery System</b> <ul style="list-style-type: none"> <li>Up to 1,500 tons per day facility at a site on Harrison Road</li> <li>Municipal solid waste, yard waste, recyclables, household hazardous waste</li> <li>From Salinas and North County franchise haulers and self-haulers</li> <li>Global Organics Energy clean fiber and organics recovery system</li> <li>Materials recovery center</li> <li>Household hazardous waste collection facility</li> <li>Transfer station</li> <li>Administrative offices</li> <li>Salvaged material sales</li> <li>Existing Sun Street facility closes</li> </ul>	Harrison Road
2	<b>Transfer Station/Materials Recover Center Only</b> <ul style="list-style-type: none"> <li>Up to 1,000 tons per day facility at one of three proposed sites</li> <li>Municipal solid waste, yard waste, recyclables, household hazardous waste</li> <li>From Salinas and North County franchise haulers and self-haulers</li> <li>Materials recovery center</li> <li>Household hazardous waste collection facility</li> <li>Transfer station to move consolidated materials to clean fiber recovery system facility (Scenario 3) for processing and directing wastes to a landfill</li> <li>Sun Street facility would be closed if either of the other two sites are selected</li> </ul>	Sun Street Harrison Road Crazy Horse Landfill
3	<b>Clean Fiber Recovery System Only</b> <ul style="list-style-type: none"> <li>Up to 1,200 tons per day facility at one of two proposed sites</li> <li>Global Organics Energy clean fiber and organics recovery system</li> <li>Existing Sun Street facility would be closed if either of the other two sites under Scenario 2 above are selected</li> </ul>	Harrison Road Johnson Canyon Landfill
4	<b>No Salinas Facility - Direct Haul to MRWMD</b> <ul style="list-style-type: none"> <li>No new facilities</li> <li>All Salinas and North Monterey County franchise tonnage direct hauled to Monterey Regional Waste Management District for burial or processing</li> <li>All self-haulers directed to MRWMD for public services</li> <li>Existing Sun Street facility would be closed</li> </ul>	MRWMD
5	<b>"No Project" (Minor Expansion of Sun Street with or without MRWMD)</b> <ul style="list-style-type: none"> <li>Up to 600 tons per day (existing Sun Street facility is expanded to accommodate additional tonnage)</li> <li>Salinas franchise solid waste and green waste received at Sun Street</li> <li>North county franchise solid and green waste received at Madison Lane</li> <li>Self-haulers choose Sun Street or Madison Lane</li> <li>Materials recovery center for self-haul customers</li> <li>Household hazardous waste collection facility</li> <li>Tonnage transferred to Johnson Canyon Landfill, or</li> <li>Select tonnage transferred to Monterey Peninsula Landfill for processing</li> </ul>	Sun Street MRWMD

MRWMD is the operator of the existing Monterey Peninsula Landfill and the Materials Recovery Facility, located outside of Marina. This facility currently accepts waste materials for landfill disposal, materials processing and recovery, drop-off recyclables, and household hazardous waste.

**REQUIRED PERMITS AND APPROVALS.** The project would require a number of potential permits, authorizations, and consultations from federal, state, and local agencies (Table 2). These approvals likely

## Notice of Preparation

include those listed below, and in some instances would be associated with specific operations and processes unique to each study scenario listed in Table 1.

**Table 2 – Potential Permits And Approvals**

Regulatory Agency		Potential Permit, Authorization, or Approval
STATE AGENCIES		
CalRecycle		Solid Waste Facility Permit
REGIONAL AGENCIES		
Salinas Valley Solid Waste Authority		Project approval
Regional Water Quality Control Board		Industrial General Permit for stormwater and Notice of Intent to Comply with NPDES Construction Permit, if disturbing more than 1 acre of land.
Monterey Bay Unified Air Pollution Control District		Authority to Construct and Permit To Operate
LOCAL AGENCIES		
Monterey County	Resource Management Agency (RMA)	Use Permit
		Possible Rezone to Public/Quasi-Public
		Site Plan and Design Review
		Construction Permits (e.g., grading, demolition, building)
		Drainage/Storm Water Review
	Environmental Health Bureau (EHB)	Solid Waste Facility Permit
		Hazardous Material Business Response Plan Permit
		Hazardous Waste Permit
		Aboveground Storage Tank Permit (if storage of petroleum is over 1,320 gallons)
		Underground Storage Tank Permit (if not removed)
		UST Removal Permit (if removed)
		Waste Tires Permit
		Solid Waste Truck Yard Permit
		Solid Waste Truck Permit
		Large Volume Transfer Station Permit
		Home Generation Consolidation Permit

## Notice of Preparation

**POTENTIAL ENVIRONMENTAL EFFECTS OF THE PROJECT.** The environmental review of the Project will address the potential for significant impacts from all of the proposed operations. Table 3 identifies the categories of potential issues and environmental effects that will be evaluated, but is not an all-inclusive list. The environmental analysis will address short-term (construction) and long-term (operation) impacts to the extent feasible and applicable.

**Table 3 – Potential Environmental Impacts**

Aesthetics	The EIR will evaluate the visual effects of the Project based on existing visual characteristics and impacts to surrounding public views. The EIR will assess whether the Project would create substantial light or glare.
Air Quality/Greenhouse Gas Emissions	<p>The EIR will analyze air quality impacts including consistency with the Monterey Bay Unified Air Pollution Control District's Air Quality Management Plan, short-term construction emissions, long-term operational emissions, exposure to sensitive receptors, and the generation of objectionable odors. The EIR will also describe the existing environment and regulatory conditions for greenhouse gas emissions and will analyze the Project's construction and operational greenhouse gas emissions.</p> <p>The EIR will characterize the existing air quality conditions and analyze impacts due to construction emissions and operational emissions.</p>
Community Impacts	The EIR will evaluate impacts to adjacent communities associated with the Project during short-term construction activities and long-term operation activities.
Cultural Resources	The EIR will evaluate impacts to cultural resources and identify any potential archaeological resources on the project site. This will include a records search, Native American consultation, and site reconnaissance.
Hazards and Hazardous Materials	The EIR will analyze potential hazards and hazardous materials associated with the Project during short-term construction activities and long-term operation activities. Focus will be given to potential hazards associated with the onsite household hazardous waste facility and any potential hazards associated with the proposed facilities or operations.
Hydrology and Water Quality	The EIR will evaluate the Project's storm water design, conformance with all drainage requirements, and potential for water quality or other impacts.

**Table 3 – Potential Environmental Impacts**

Land Use and Planning	The EIR will identify and evaluate the Project's consistency with applicable land use and zoning designations, plans, and policies; and discuss the project's compatibility with other land uses. The EIR analysis will also focus on any requirement for variances or rezoning at the different sites.
Noise and Vibration	The EIR will assess the short-term construction and long-term operational impacts of the project to surrounding land uses in relation to applicable code and zoning ordinances, focusing on nearby sensitive receptors.
Transportation/ Traffic	The EIR will evaluate the project's construction impacts and focus on the Project's operational impacts which will discuss the project's increase in traffic from truck trips during to surrounding roadway segments and intersections. A Traffic Impact Analysis will be prepared and will be incorporated into the EIR.
Utilities and Public Services	The EIR will assess the potential impacts to water supply, wastewater collection and treatment, solid waste, police and fire service, and schools and associated infrastructures. Generation and reuse of wastewater will be evaluated.
Growth Inducing Impacts	This project will provide long-term waste disposal services that help comply with current and future waste reduction strategies and requirements. It will evaluate the impacts for up to 1,200 tons per day processing, and the consistency of that throughput with general plans for waste collection, processing, and disposal needs. The project will address the potential for any growth-inducing effects, or removal of obstacles to growth.
Cumulative Impacts	The EIR will assess the potential cumulative impacts of the project when combined with past, present, and reasonably anticipated future projects in the area.
Alternative Scenarios	The EIR will explore four project alternative scenarios (identified in Table 1), plus a no project alternative. A preferred alternative has not been identified at this time.

# Notice of Preparation

**PUBLIC SCOPING MEETINGS.** The Authority will hold an EIR scoping meeting for public agencies on Tuesday May 2, 2017 at 1:30 pm:

**Scoping Meeting, at the Salinas Valley Solid Waste Authority  
128 Sun Street, #101, Salinas, CA 93901  
May 2, 2017 at 1:30 pm**

***RSVP is requested if you are planning to attend the scoping meeting in person***

**PROJECT SPONSOR/APPLICANT**

Salinas Valley Solid Waste Authority  
128 Sun Street, #101  
Salinas, CA 93901

**CONTACT & MAILING INFORMATION**

Patrick Mathews, General Manager/CAO  
Salinas Valley Solid Waste Authority  
PO Box 2159  
Salinas, CA 93902  
Telephone: (831) 775-3005  
Fax: (831) 755-1322  
Email: [patrickm@svswa.org](mailto:patrickm@svswa.org)

**COMMENTS ON THE SCOPE OF THE EIR.** Please provide your comments regarding scope and content of the EIR at the earliest possible date, but no later than **May 31, 2017**. All agency comments should be submitted in writing either by mail to **Patrick Mathews, General Manager, Salinas Valley Solid Waste Authority, PO Box 2159, Salinas, CA 93902**, or by email to [patrickm@svswa.org](mailto:patrickm@svswa.org).

Please include the name, phone number, and email of a contact person at your agency in your response. Other comments from interested parties can be submitted orally at a scoping meeting or in writing to the contact listed above.

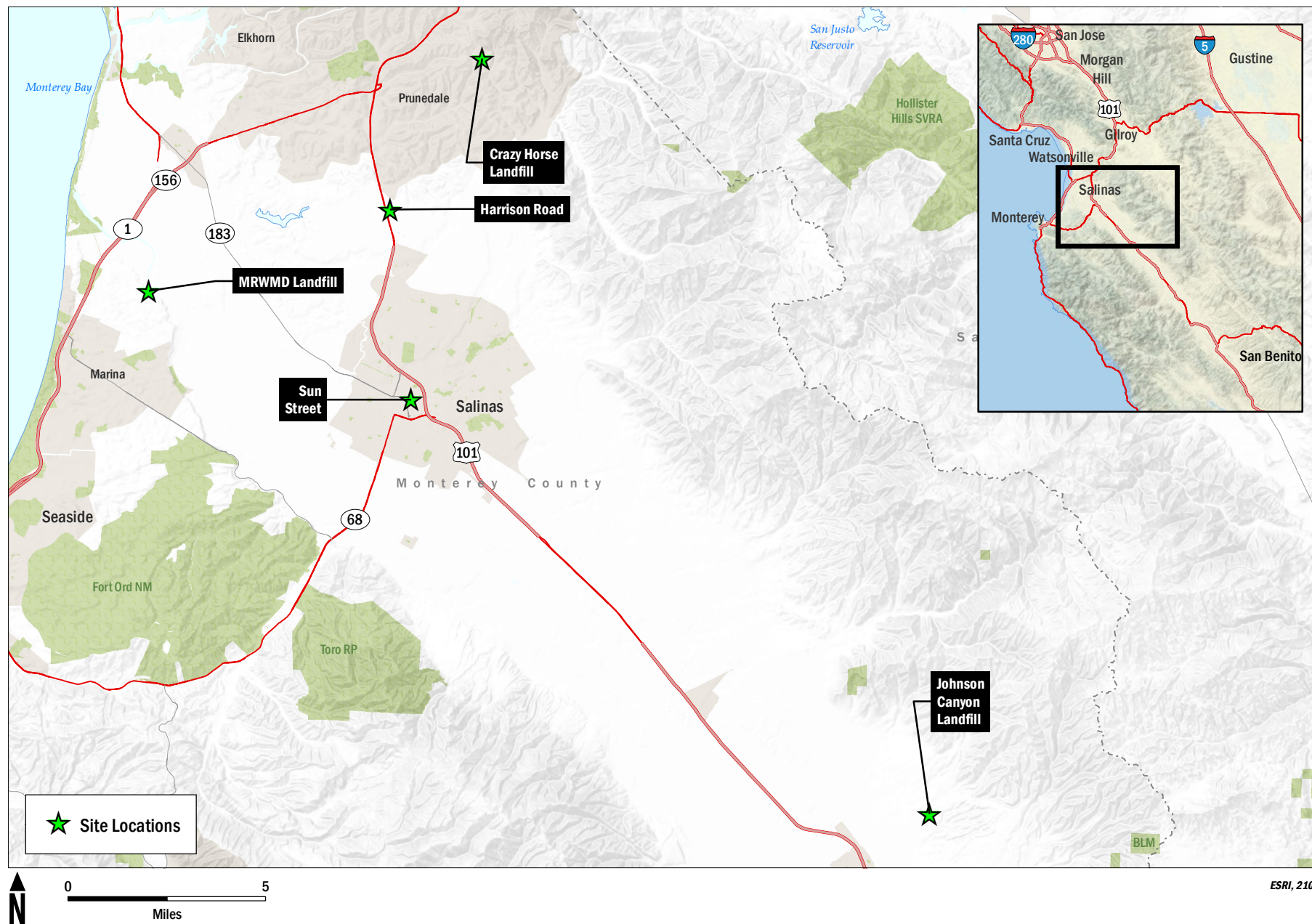
Sincerely,

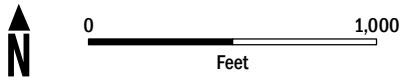
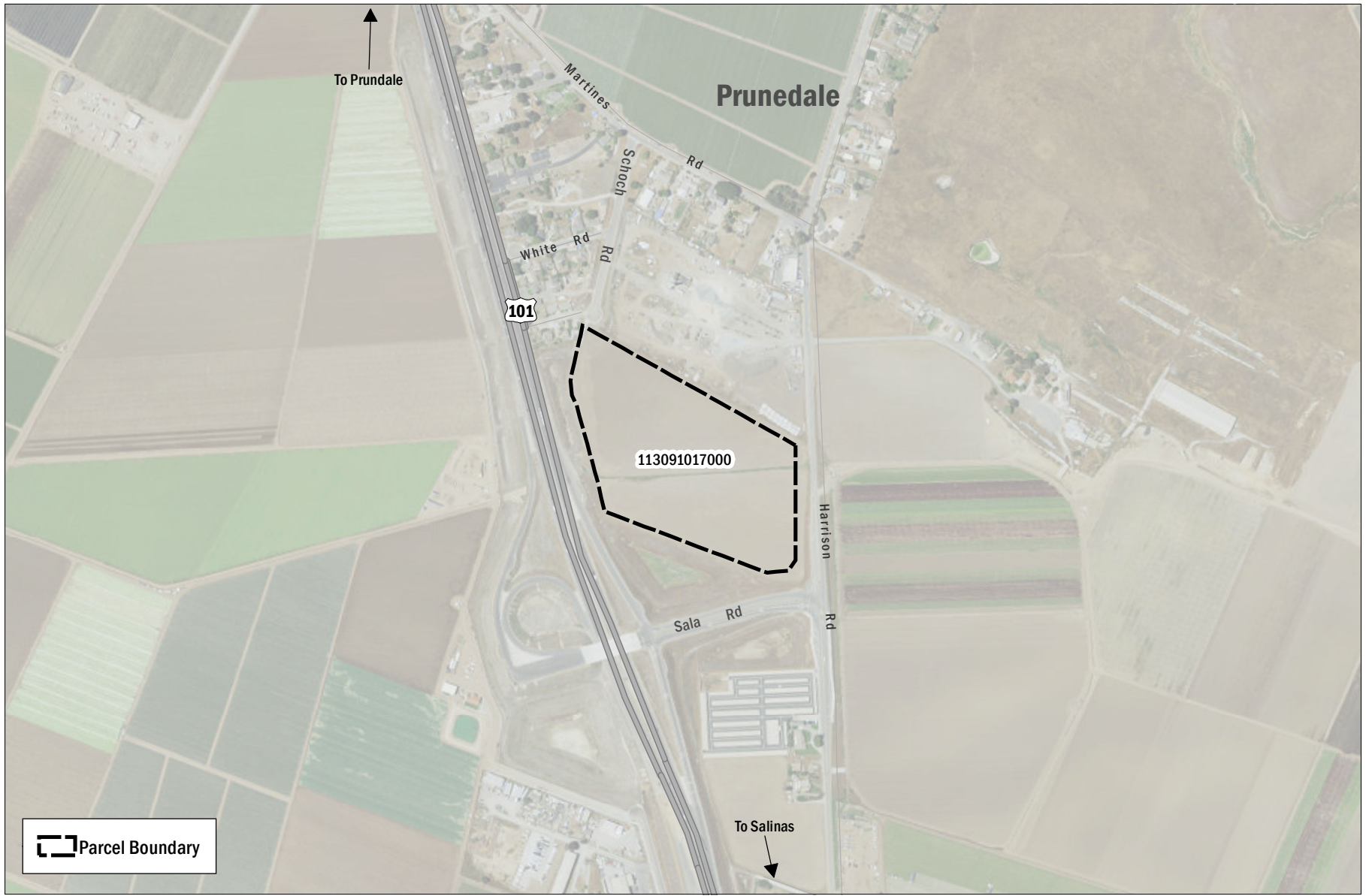
Patrick Mathews, General Manager/CAO  
Salinas Valley Solid Waste Authority

Enclosures

Figures 1 – 6 Regional and Vicinity Maps  
Harrison Road Conceptual Plan  
Sun Street Transfer Facility Conceptual Plan  
Crazy Horse Landfill Conceptual Plan  
Johnson Canyon Landfill Conceptual Plan



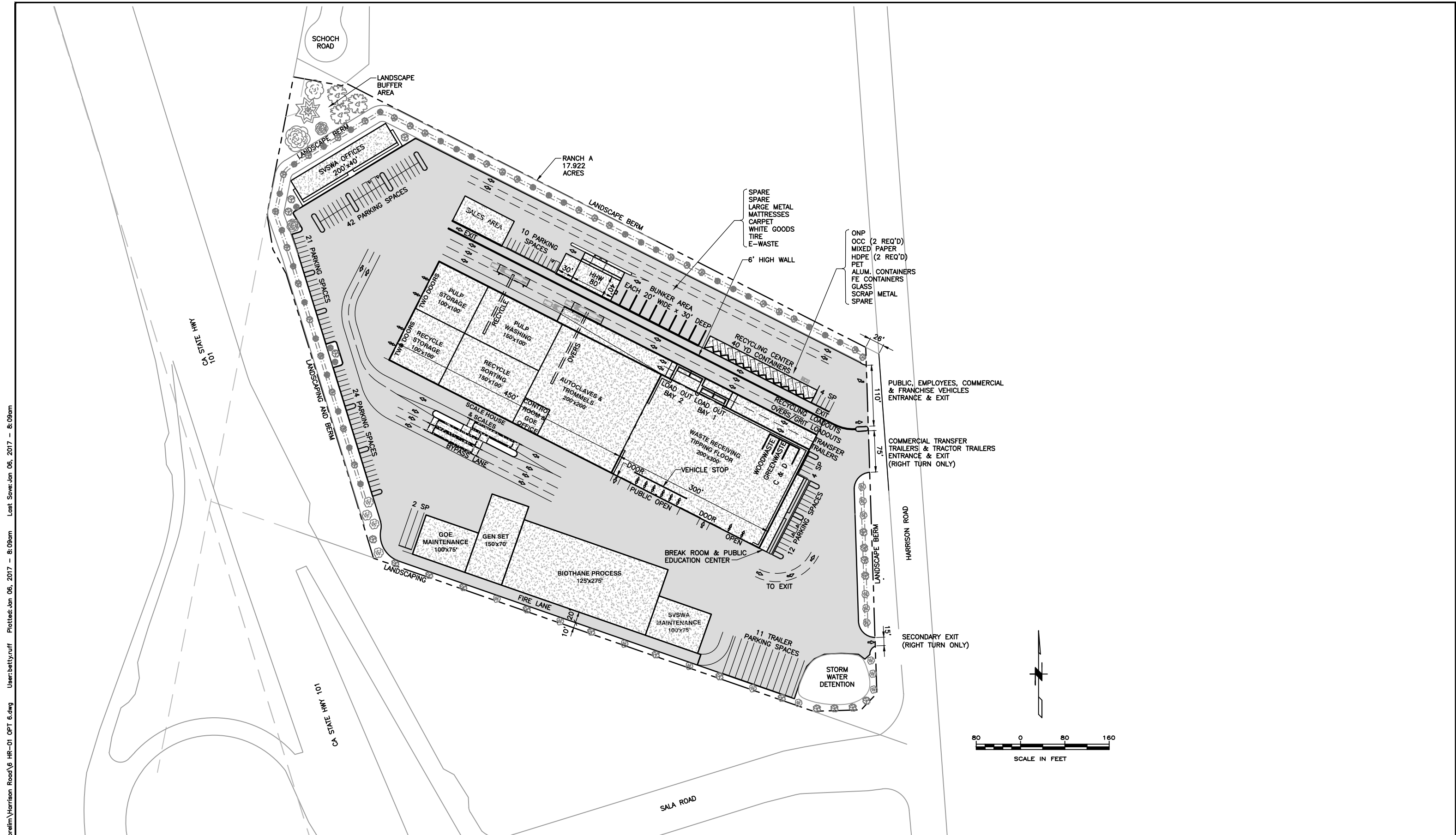




ESRI, 2106

**FIGURE 2**  
*Proposed Harrison Road Site*



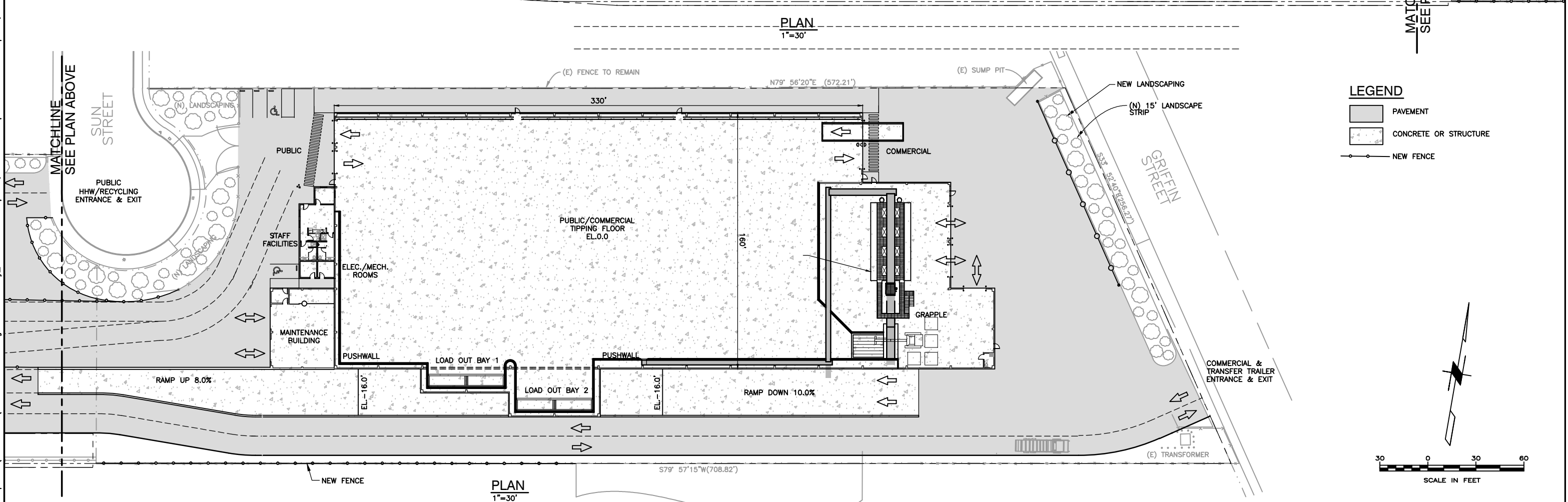


PRELIMINARY NOT FOR CONSTRUCTION				JOB No.	DESIGNED: RC	PROJ. ENGINEER: RC	<div>WARNING</div> <div></div> <div>IF BAR DOES NOT MEASURE 1" AT FULL SIZE, THEN SCALES ON DRAWING NOT TO SCALE.</div>			HARRISON ROAD TRANSFER STATION		DRAWING NUMBER: HR-01						
<table><tr><td>A</td><td>12/21/16</td><td>BJR</td><td>FOR REVIEW</td></tr><tr><td>No.</td><td>DATE</td><td>BY</td><td>REVISION</td></tr></table>				A	12/21/16	BJR				FOR REVIEW	No.	DATE	BY	REVISION	SCALE:  AS NOTED	DRAWN BY: BJR	APPROVED BY:	CAD FILE NUMBER: HR-01-OPT6
				A	12/21/16	BJR				FOR REVIEW								
No.	DATE	BY	REVISION															
				CHECKED BY:	DATE: DEC 2016		SHEET: OF	REV. a										

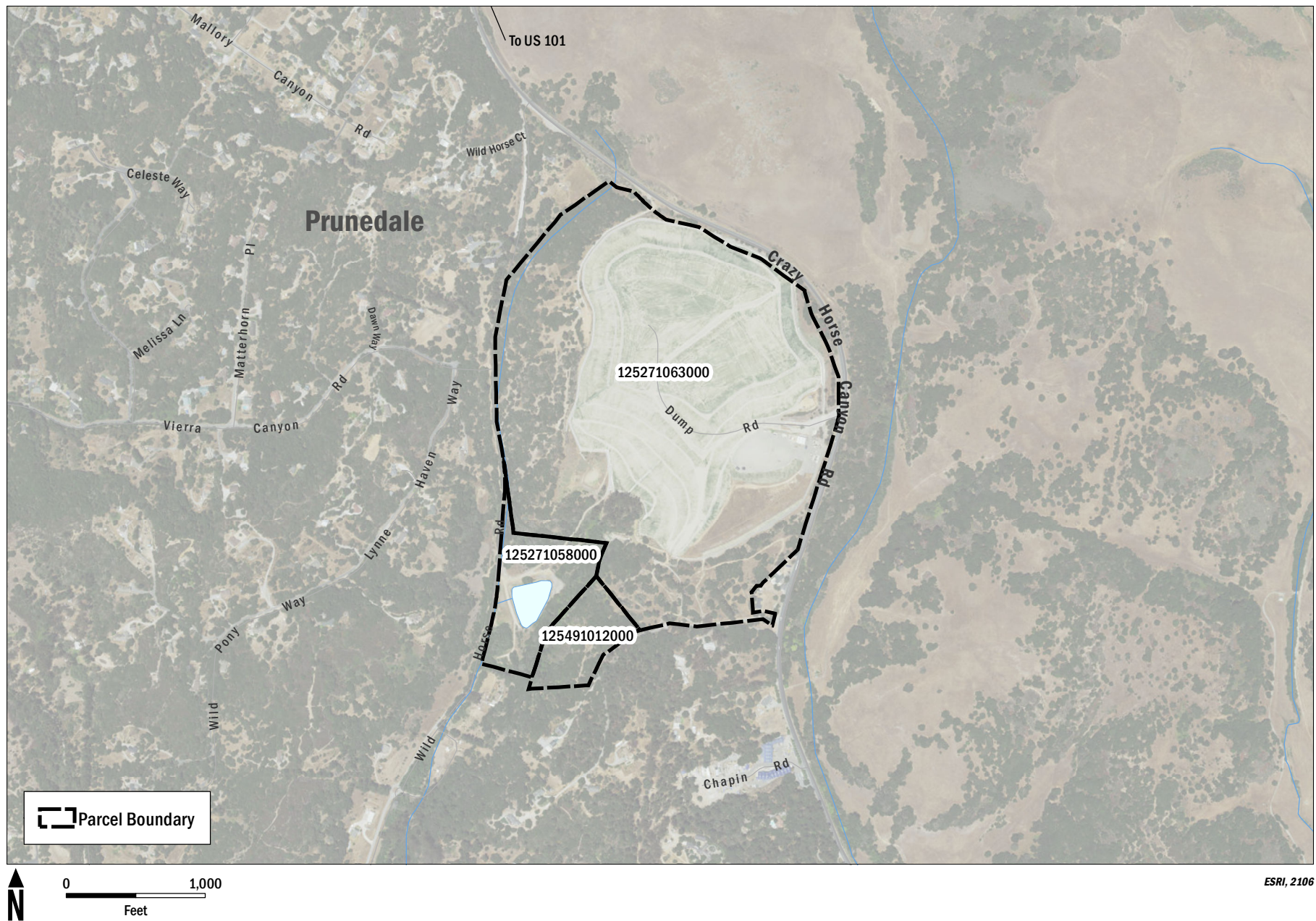






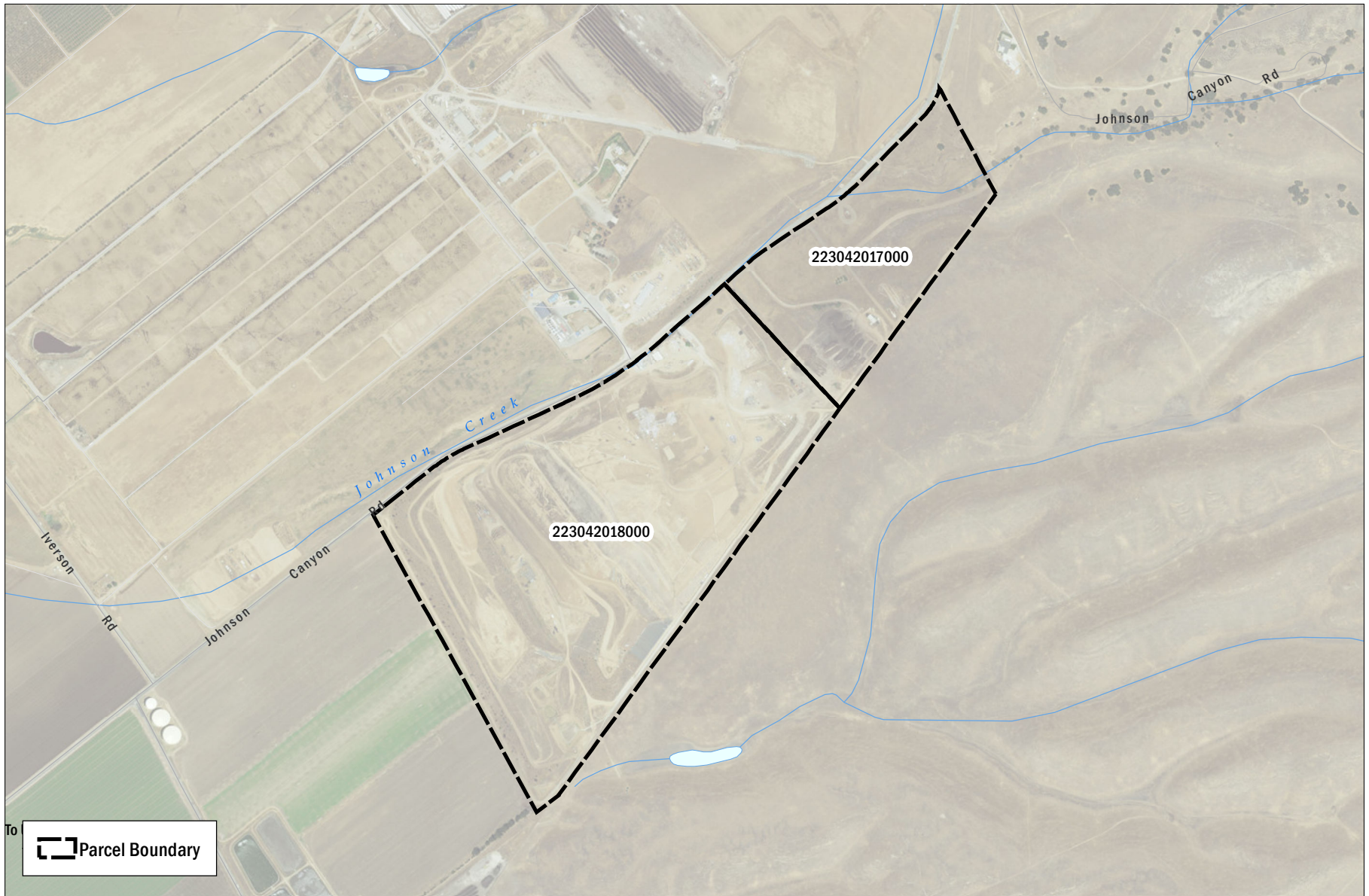


PRELIMINARY NOT FOR CONSTRUCTION				JOB No.	DESIGNED: RC	PROJ. ENGINEER: RC	<div>WARNING</div> <div></div> <div>IF BAR DOES NOT MEASURE 1" AT FULL SIZE, THEN SCALES ON DRAWING NOT TO SCALE.</div>	<div></div> <div>111 SW Columbia, Suite 1500 Portland, Oregon 97201-5814  (tel) 503-222-7200 (fax) 503-222-4292 www.aecom.com</div>	<div></div> <div>SALINAS VALLEY SOLID WASTE AUTHORITY</div>	SUN STREET TRANSFER STATION		DRAWING NUMBER: SS-02
				SCALE:	DRAWN BY: BJR	APPROVED BY:				CAD FILE NUMBER: .		
				AS NOTED	CHECKED BY:	DATE: APRIL 2016				SHEET: OF	REV. A	
A	04/21/16	BJR	FOR REVIEW									
No.	DATE	BY	REVISION									





			PRELIMINARY NOT FOR CONSTRUCTION	JOB No.	DESIGNED: RC	PROJ. ENGINEER: RC	<div>WARNING</div> <div></div> <div>IF BAR DOES NOT MEASURE 1" AT FULL SIZE, THEN SCALES ON DRAWING NOT TO SCALE.</div>	<div></div> <div>111 SW Columbia, Suite 1500 Portland, Oregon 97201-5814 (tel) 503-222-7200 (fax) 503-222-4292 www.aecom.com</div>	<div></div> <div>SALINAS VALLEY SOLID WASTE AUTHORITY</div>	CRAZY HORSE LANDFILL		DRAWING NUMBER: CH-01
				SCALE:  AS NOTED	DRAWN BY: BJR	APPROVED BY:				CAD FILE NUMBER: CH-01-OPT2		
A	05/23/16	BJR		FOR REVIEW							SHEET: OF	REV. A
No.	DATE	BY	REVISION		CHECKED BY:	DATE: MAY 2016				CONCEPTUAL SITE PLAN		

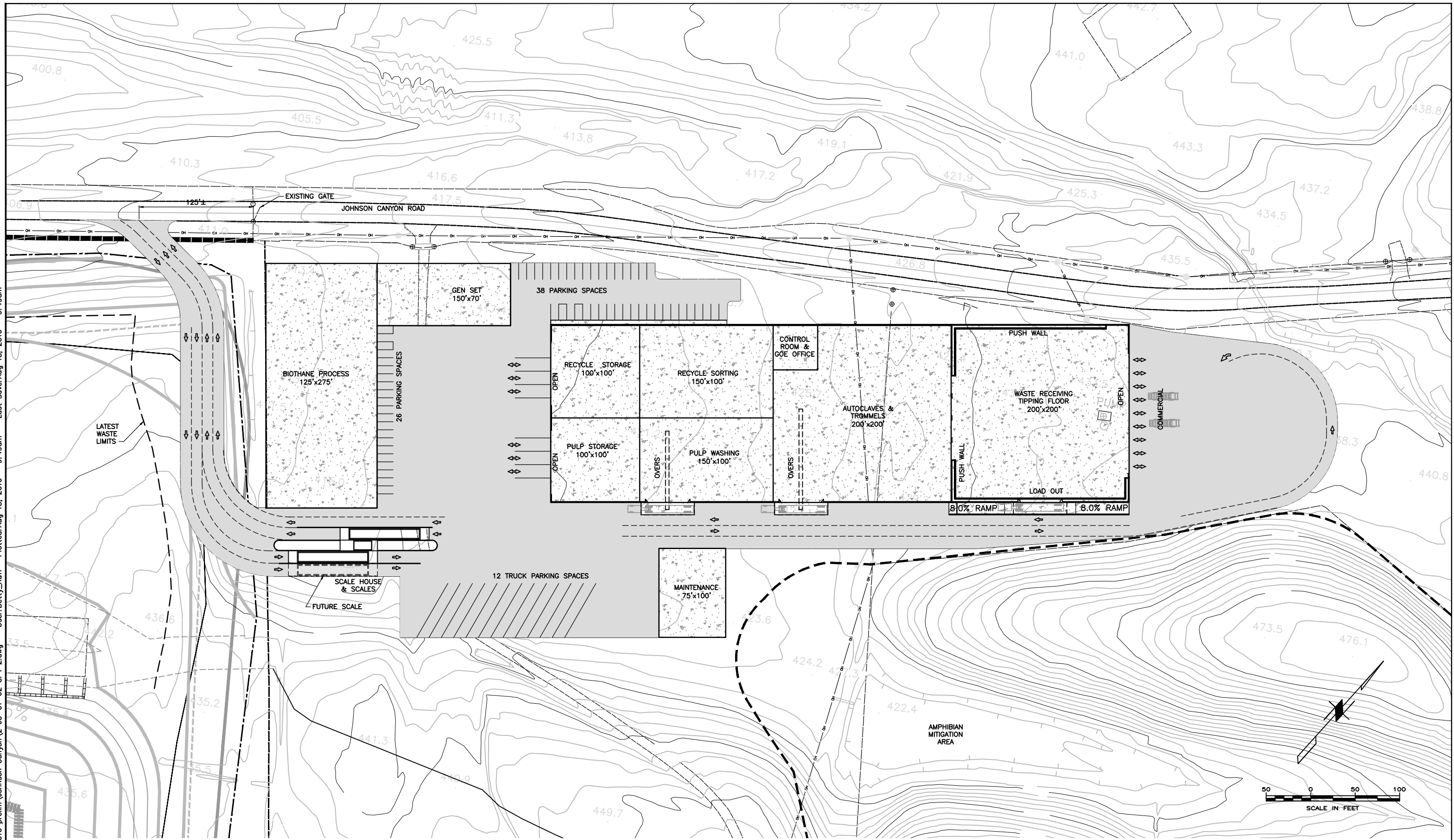


ESRI, 2106

**FIGURE 5**  
*Johnson Canyon Landfill Site*



I:\Salinas Valley SWA\2016 prelim\Johnson Canyon\2 JC-01-OPT2.dwg User:Betty\_Ruff Plotted:Aug 18, 2016 -- 9:49am Last Save:Aug 18, 2016 -- 9:49am



No.	DATE	BY	REVISION
D	06/06/16	BJR	FOR REVIEW
C	04/25/16	BJR	FOR REVIEW
B	04/25/16	PCF	FOR REVIEW
A	01/27/16	PCF	FOR REVIEW

JOB No.	DESIGNED: RWC	PROJ. ENGINEER: RWC
SCALE: AS NOTED	DRAWN BY: BJR	APPROVED BY:
	CHECKED BY:	DATE: MAY 2016

WARNING 1/2 IF BAR DOES NOT MEASURE 1" AT FULL SIZE, THEN SCALES ON DRAWING NOT TO SCALE.
---



JOHNSON CANYON ROAD LANDFILL

CONCEPTUAL  
SITE PLAN

JOHNSON CANYON ROAD LANDFILL	
CONCEPTUAL SITE PLAN	

