



Annual Report

Fiscal Year 2008-09



Salinas Valley Solid Waste Authority

www.svswa.org

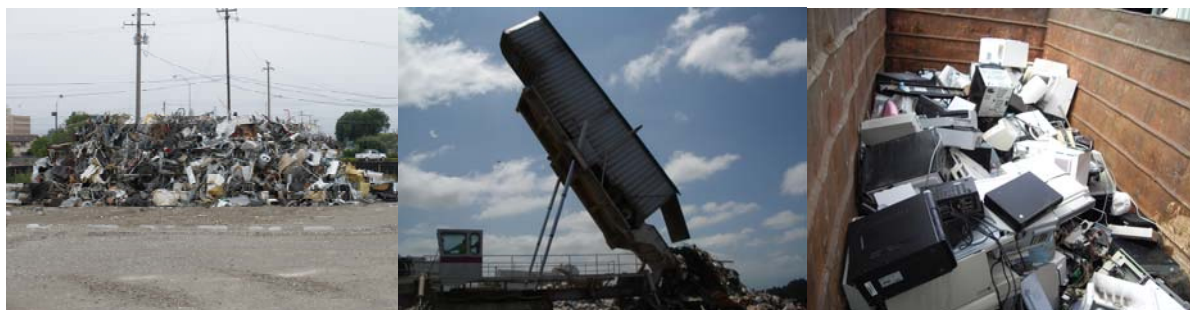
128 Sun Street, Suite 101

Salinas, CA 93901

Phone - (831) 775-3000



Table of Contents



Message from the General Manager	1-2
Board Members/ Mission, Vision & Values	3
2008-09 Highlights.....	4
Resourcefulness	5
Customer Service.....	6
Staff	7
Household Hazardous Waste	8-9
What Happens To Your Trash	10
Financial Information	11-12
Community Partnerships	13
Diversion.....	14
Public Education.....	15
Recycling and Waste Prevention	16
Resource Recovery Team	17
Operations	18-19
Future FY 2009-10	20

Letter From General Manager/CAO



Today we find our world in a state of great change. Natural resources are being depleted to support our growing demand for products and technology. The need to preserve the resources we have left and recover those we have thrown away have become a major focus of the world's environmental agenda. Garbage is no longer something we can take for granted and just throw in a can with the expectation that it will just go away. This is the reason the Salinas Valley Solid Waste Authority (Authority) exists: to responsibly manage the waste from our community, to educate our citizens in responsible waste management practices, and to find new and more sustainable ways to reduce, reuse, recycle and recover the resources we throw away each day.

Fiscal 2008 and 2009 was also a year in which the Authority made important progress and changes in key areas such as:

- Leadership: I have completed my first year as the General Manager/CAO for SVSWA. I am excited to be part of a cutting edge and growing organization. The outstanding staff has been a huge help in acclimating me into the SVSWA family. I would like to thank our Board of Directors for their support through my first year!
- Sun Street Transfer Station 1st Annual Performance Review and Short Term Expansion
- Closure of Crazy Horse Landfill to residential customers
- Construction of a new 7 year disposal cell at Johnson Canyon landfill
- Developed new Mission, Vision and Values for the Authority
- Future of Salinas Transfer Station
- Johnson Canyon Landfill Gas Power Project
- HOPE Services Partnership
- Scalehouse Operations Transition Plan
- Conversion Technologies Commission

These key areas have made the Authority a stronger agency — we are more efficient, agile, and lean today and continue to be “Resourceful” in all areas of the Authority.

Finances

Our industry is in the process of resetting to a new baseline from which we expect growth to resume. We ended the year with \$17,910,910 in revenue, \$16,631,460 in expenses, and reserves increased to \$4,156,800.

Investing in Communities and Fostering Opportunity

Perhaps our greatest strength, however, is that we are focusing on what our community and world needs. Our Diversion and Resource Recovery programs are at the heart of our community efforts, and must become essential parts of businesses, schools, and homes around the Salinas Valley. Our commitment to using the power of education to help communities thrive and enable people around the County to achieve their recycling potential, continues to drive our work at the Authority.

Commitment to Innovation

The recession has not changed our fundamental approach to our Mission of developing an integrated system of waste reduction, reuse, recycling, and innovative technology. Technological innovation will become an important part of moving towards a “future without landfills”.

Landfills have historically been the center of managing society’s waste, but the idea of building new landfills has fallen in great disfavor with the public. This is a difficult reality that all communities across the country are facing. It is with great pride that we can say that the Authority has recognized this dilemma and proactively committed to moving towards a “future without landfills”.

What the Future Holds

A difficult economic climate made fiscal 2008-09 a challenging year for the Authority and our entire industry.

But our core values of being — *Fiscally Prudent* when making all financial decisions, *Innovation* to stay ahead of new ways of doing business, our *Integrity* which encourages the community to trust us with providing services, using *Efficiency* in the way we work, taking advantage of our internal and external talents by being *Resourceful* and a deep commitment to *Public Education* to improve people’s lives — have served the Authority well.

Although the economic climate is likely to remain challenging in fiscal 2009-10, our opportunities are greater than ever.

This annual report is a summary of the accomplishments and waste reductions activities of the Authority and its dedicated professional staff for the 2008-09 fiscal year. We hope this report provides the reader with a solid overview of the sustainable direction the Authority is taking to meet the ever changing landscape of resource recovery and waste management in the Salinas Valley. Constructive comments and suggestions are always welcome and encouraged so this report can be improved and updated to better reeducate the community.

I want to personally thank the Authority Board and our Community for the support and commitments we have all made to improve our environment.



R. Patrick Mathews
General Manager/CAO



Board of Directors



Lou Calcagno
President
[County of Monterey](#)
Since 1999



Gloria De La Rosa
Vice President
[City of Salinas](#)
Since 2001



Richard Ortiz
Alternate Vice President
[City of Soledad](#)
Since 2001



Fernando Armenta
[County of Monterey](#)
Since 1997



Matt Gourley
[City of Gonzales](#)
Since 2009



Janet Barnes
[City of Salinas](#)
Since 1998



Annie Moreno
[City of Greenfield](#)
Since 2008



Robert Cullen
[City of King](#)
Since 2008



Dennis Donohue
[City of Salinas](#)
Since 2007

Mission Statement

"To manage Salinas Valley solid waste as a resource, promoting sustainable, environmentally sound and cost effective practices through an integrated system of waste reduction, reuse, recycling, innovative technology, customer service and education."

Vision Statement

To reduce the amount of waste by promoting individual and corporate responsibility.
To recover waste for its highest and best use while balancing rates and services.
To transform our business from burying waste to utilizing waste as a resource.
To eliminate the need for landfills.

Values

Innovation * Integrity * Public Education * Efficiency * Fiscally Prudent
Resourcefulness * Customer Service * Community Partnerships

2008-09 Highlights

Sun Street Transfer Station 1st Annual Performance

In the first fiscal year of being an Authority-operated facility, a savings of \$160,260 was achieved, together with numerous efficiency improvements. Keep up the good work Sun Street Crew!



Crazy Horse Landfill Closure

The Crazy Horse Landfill was closed to residential customers on May 26, 2009. The Crazy Horse Landfill had been in operations since the 1930's. An extensive outreach program was set in place to alert the public of the closure and notify them of available locations to discard waste. Residents can now bring their waste to the Sun Street Transfer Station in Salinas or the Johnson Canyon Landfill in Gonzales.



Johnson Canyon Three New Cells

Wood Bros. Inc. (WBI) began work on January 5, 2009. Project is now complete. 800,000 cubic yards were removed to provide space for future incoming waste to be placed in the landfill. Also installed into the three new cells were the low permeability soil layer, the liner system, and the leachate collection and removal system, all designed to protect the environment.

New Mission, Vision and Values

On February 26, 2009, members of the Board, General Manager and Authority Staff participated in a Board Retreat where the objective was to discuss Authority goals and projects, as well as, to bring forth a draft revision of a Mission and Vision statement, and newly created Values for the Authority. The new Mission Statement (located on page 2) is simple and clear, encompasses an overarching goal, inspires change, and is long term in nature (written to last 100 years or more). The Vision Statement is a snapshot of what the organization intends to become within five to 15 years in the future, it translates our mission into meaningful results, and guides time, energy, and resources. The Values were chosen to be timeless principles that guide an organization, deeply held beliefs demonstrated by day-to-day behaviors, representative of the way things "get done" within the organization, and are authentic to our business.

Future Work Street Transfer Station

The Authority Board approved a memorandum of understanding with the City of Salinas for the purchase of the Work Street Property for the future Salinas Area Transfer Station and Recycling Center.

Johnson Canyon Landfill Gas Generation Project

The Authority Board selected Amaresco to complete design, construction and operations for this project. It is anticipated this project will generate some 1.4 megawatt (MW) of energy and should be online within 12-18 months. This initial plant will supply enough power to support 1,400 households and it is anticipated that up to 4.5 MW of additional generating capacity will be installed over the next 15-20 years of landfill activity.

Sun Street Transfer Station Short-Term Expansion

The Authority has implemented interim improvements that will promote and emphasize recycling to accommodate anticipated increased traffic and tonnage due to the Crazy Horse Landfill closure.

HOPE Services Recycling

A contract was awarded to Hope Services for the recycling of mattresses and box springs for FY 2009-10. During FY 2008-09 more than 6,000 mattresses and box springs were recycled.



Scalehouse Operations Transition Plan

The Authority has been vigorously planning the transition of scale house operations to the Authority which successfully took effect September 2009.

Conversion Technologies Commission

Representatives from the Salinas Valley Solid Waste Authority and HDR Engineering recently took part in tours of facilities that incorporate advanced waste conversion technologies (CT) to reduce or eliminate landfilling.

These tours were conducted in 2008. A total of five (5) facilities were visited, all of which represented variations of waste gasification technologies



Our Values

“Resourcefulness”

**Salinas Valley Solid Waste Authority has a very resourceful staff with sustainability in mind.
The staff strives to help save money and find smarter ways to perform their jobs.**

Green Board Meetings

Staff continuously looks for ways to reduce impacts to the environment and to preserve valuable resources, even in the most practical areas. The internal review of staff reports, prepared for inclusion in the Board of Directors and Executive Committee agenda packets, is now conducted electronically, saving paper and time. Refreshments at the meetings are now provided in reusable and/or compostable ware, reducing the amount of waste created by disposables. Different waste bins have been labeled and placed at the Gonzales Council Chambers for proper disposal, including compost and dirty dishes containers. It's worthy to note that some of the tableware is made of 100% recycled content, and is washed in the office's new dishwasher.

Management of Information Technology (IT) Systems Brought In-House – \$19,000

Instead of contracting out the management of the IT system, internal staff has been developed to handle this function along with their other duties resulting in an annual savings of approximately \$19,000.



Retrofit Office Lighting Fixtures at no Cost to the Authority - \$4,718 savings

Through the AMBAG Energy Watch program, \$7,353 worth of free energy-savings equipment has been installed resulting in annual savings of 39,320 kwh of electricity for an estimated annual savings of \$4,718 in utility costs.

Constructed 2,000 gl. water truck Saved \$36,000

Instead of buying a \$50,000 water truck, staff constructed a \$14,000 - 2,000 gal water tank that can be placed on the back of the Authority's roll-off truck and removed when not in use. This saved the Authority \$36,000.



Installation of 19 gas well-heads and related piping—net savings of \$22,500



Utility Services Adjusted

Changed PG&E billing schedules where it would result in savings. Estimated annual savings \$6,000.

Sun Street Operations Adjusted

By operating Sun Street Transfer Station more efficiently we are able to handle 150 more tons daily from BFI resulting in a savings of \$257,400 for direct hauling costs.

Increased Sun Street Revenue

We are expanding our public drop-off recycling opportunities at both the Sun Street Transfer Station and the Johnson Canyon Landfill. The increase recovery of recyclable items is also expected to yield additional revenues as we expand our marketing efforts.

New Processed C&D Rate

Negotiated a special rate with Randazzo for *processed* Construction and Demolition material. This is generating additional revenue while earning state diversion credits as alternative landfill cover. Since December of 2008, this new rate has generated \$25,800.

Sale of Salvaged Metal - \$24,000

Sun Street Transfer Station diverted 282 tons of metal over a 10 week period. The metal was sold at a bid price of \$85 per ton resulting in \$24,000 in new revenues for this first period. Staff will continue to stockpile metal until we can get a good price for it. We expect the revenues in the fiscal year 2009-10 from this expanded diversion program to be \$125,000 to \$175,000.

Sale of Concrete and Asphalt

We are proposing reduced rates for concrete and asphalt in the 2009-10 fiscal year to encourage an increase in the diversion of these materials. Both of these materials have market value and once processed can yield a net revenue (after processing costs) in the range of \$1.00 per ton

BFI Hauling Reimbursement

The Authority Board approved a temporary transportation surcharge at Authority landfills on City of Salinas franchised waste only, to provide reimbursement to BFI for its direct hauling costs to Johnson Canyon in FY 2009-10. This action will allow the Authority's general tipping rates to remain at the current level with no increase.

Our Values

“Customer Service”

Salinas Valley communities are growing rapidly. To ensure that all families in our region can thrive and enjoy a safe and healthy environment, the Authority helps residents reduce waste, recycle and dispose of toxic materials safely. Residents and Businesses can bring waste to our many locations. If you have any question on what should be recycled and what should be disposed of please call us at 775-3000.

www.svswa.org

Visit our website for:

Disposal Fees

Location & Hours

What can be recycled

Employment Opportunities

Projects available for bid

Recycling info and projects for classrooms

Much more



Disposal Drop-off Locations

Location	Hours	Phone Number
Sun Street Transfer Station 139 Sun Street Salinas, CA	Mon—Sat 8 a.m.—5 p.m.	424-5535
Sun Street HHW 139 Sun Street Salinas, CA	Mon—Sat 9 a.m.—4 p.m.	424-5520
Johnson Canyon Landfill 31400 Johnson Canyon Rd. Gonzales, CA	Sun—Sat 7 a.m.—4 p.m.	675-2165
Johnson Canyon HHW 31400 Johnson Canyon Rd. Gonzales, CA	First Saturday of Each Month 9 a.m.—4 p.m.	675-2143
Jolon Road Transfer Station 52654 Jolon Rd. King City, CA	Mon—Sat 7 a.m.—4:00 p.m. Closes at 12:00 p.m. on Saturdays	385-6213

Franchise Hauler Contact Information

Salinas	BFI Salinas	(831) 755-2384
Gonzales Soledad Greenfield	Tri-Cities Disposal & Recycling	(888) 678-6798
King City	King City Disposal	(831) 385-5694
Unincorporated Monterey County	Waste Management	(831) 796-2200

Our Values “Integrity”

Our staff is dedicated to enhancing the integrity of the Authority as a whole.

The 34 Authority employees provide service for an estimated population of 270,000. That’s one employee for 8,000 residents. From Araceli one of our HHW Maintenance Workers helping you dispose of household chemicals to Monica one of our Administrative Assistants helping you find the location where to recycle, all of our staff strives to promote recycling and provide the best service possible.

Employee Service Recognition Thanks for Your Continued Dedication!

Araceli Gutierrez



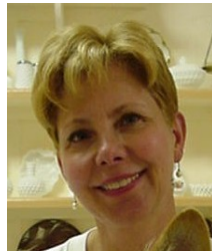
10 Years

Alan Styles



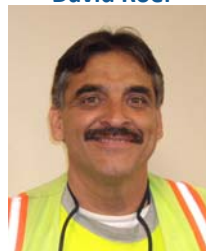
10 Years

Susan Warner



10 Years

David Roel



7 Years

Cesar Zuniga



7 Years

New Hires for FY 2008-09



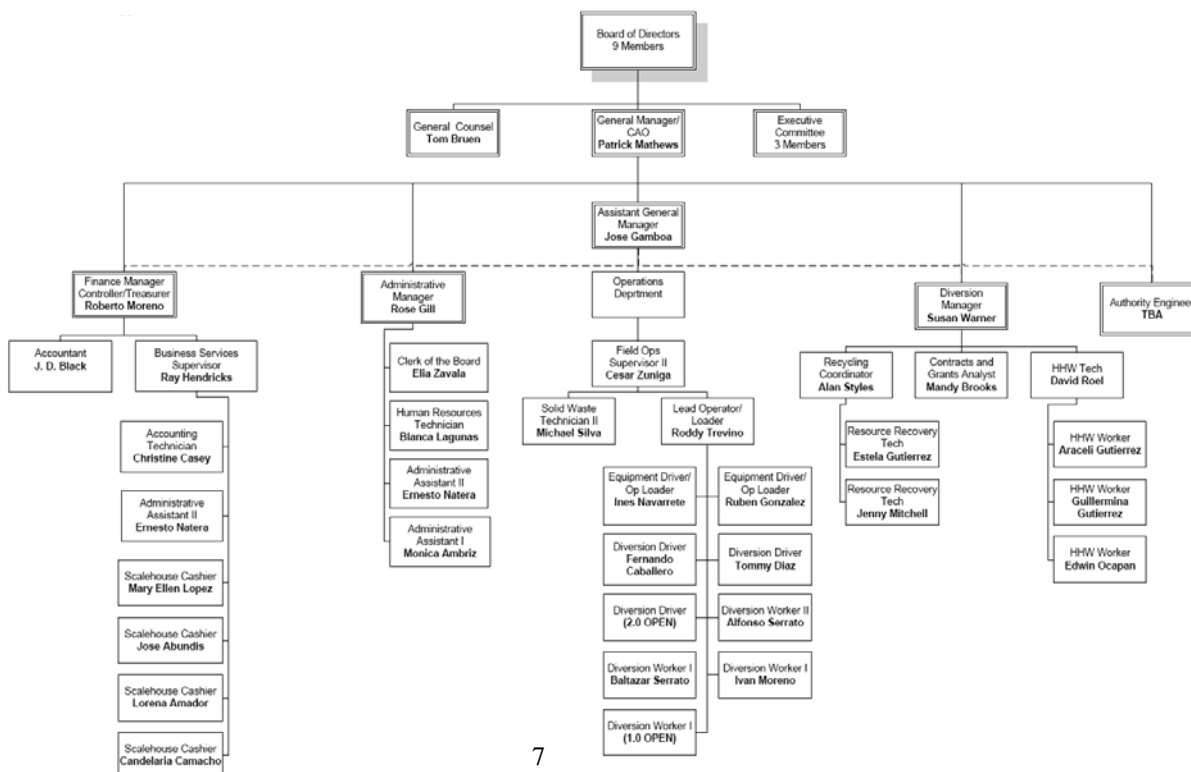
Tommy Diaz
Diversion Driver



Ivan Moreno
Diversion Worker I



Baltazar Serrato
Diversion Worker I



House Hold Hazardous Waste (HHW) Program

When we think about “Hazardous Waste,” we tend to think about barrels of sludge or glowing radioactive ooze, but it's not all so obvious. Toxic products can lurk in many corners of your business or houses—pesticides for landscaping, oil, worn out fluorescent bulbs and chemical cleaners. When these products are left over, unwanted or unusable, they turn into potentially harmful waste.

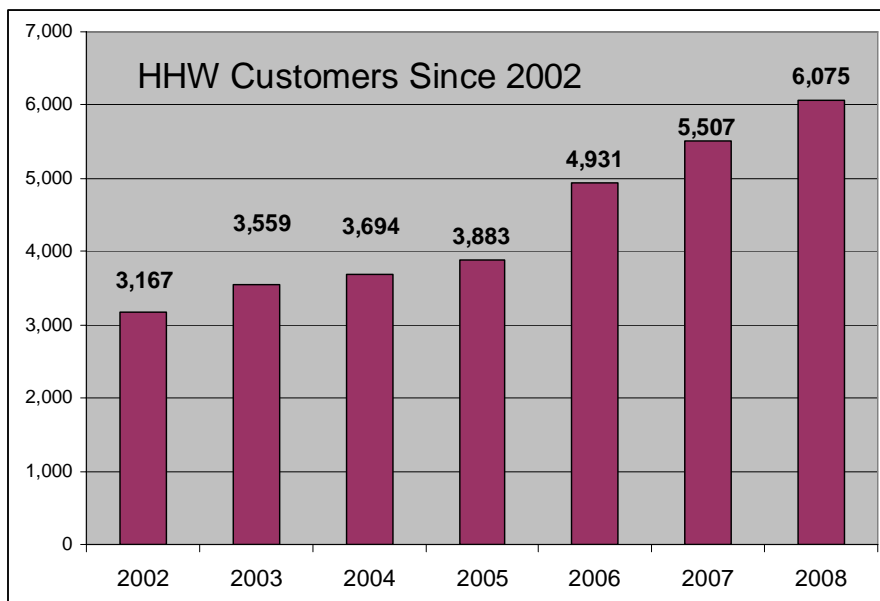


Obvious Toxics

It is easy to imagine why certain toxics, for example, a bottle of weed killer or a canister of diesel fuel might pose a danger to us and the environment. Inhaling fumes and skin contact can damage our health, especially that of our children. Throwing these products into the trash or pouring them down the sink or into a storm drain pollutes our soil, groundwater, rivers and bay, and can harm wildlife.

Hidden Toxics

Other hazardous waste is less obvious in its toxicity. For example, electronics such as computers and cell phones, batteries, fluorescent light bulbs and thermostats are safe while in use, but turn into toxic waste when discarded. The reason is that they contain heavy metals like mercury and cadmium, and other harmful chemicals that are released into the environment when these products are crushed in the landfill.



HHW Safe Disposal and Recycling

Household Hazardous Wastes (HHW) are leftover, unwanted, unusable or spent products that contain toxic ingredients. These products must be disposed of properly to protect the health of our families and the environment.

Limited quantities of the items listed below can be dropped off at Authority's HHW collection facilities. Please, do not transport more than 15 gallons or 125 pounds of HHW. Bring chemicals in secure containers and do not mix them! Do not bring explosives, radioactive material, drums, medical waste and unstable chemicals.

Items Accepted at the Household Hazardous Waste Facilities

Paint, thinners and solvents
Cleaners such as bleach, drain openers
Cooking oil/grease
Fertilizer, pesticides
Motor oil & filters
Antifreeze and auto products
Batteries
Aerosol (spray) cans
Fluorescent light bulbs
Needles, razors and syringes
Electronics
TVs, computers and cell phones
Items containing mercury

FACT: Residents can pickup recycled paint
FREE of charge at our Sun St. HHW Facility.



Household Hazardous Waste Collected During FY 2008-09

Material	Pounds Collected
Flammable Solid / Liquids	8,297
Oil Base Paint	50,645
Poisons	11,995
Acid	4,475
Base	10,790
Oxidizer	845
PCB Containing	710
Antifreeze	6,030
Auto Batteries	46,566
Latex Paint	80,250
Motor Oil	101,698
Used Oil Filters	2,675
Mercury containing	200
Fluorescent Lamps	26,488
Household Batteries	8,181
Electronic Waste	427,564
Universal Waste	288,869
Sharps & Pharmaceutical Waste	543
Gas Cylinders	5,448
Non universal waste aerosol containers	7,030
Other Materials	3,515
Total Pounds Collected	1,094,814
Total Customers for 2008-09	6,075

HHW Location & Hours

139 Sun St.
Salinas, CA
Monday—Saturday
9:00 AM—4:00 PM
(831) 424-5520

31400 Johnson Canyon Rd.
Gonzales, CA
First Saturday of Month
9:00 AM—4:00 PM
(831) 675-2165

What Could Happen To Your Waste After Its Picked Up?



Trash Containers are picked up at the curbside and sent to the transfer station or landfill.



Trash is unloaded at the transfer station and loaded into large Transfer Trucks.



Transfer Trucks will then go to the Johnson Canyon Landfill and take it to the face of the landfill.



Once at the face of the landfill, trash will be unloaded and compacted. After each day a layer of soil will cover the trash landfilled for that day.



Yard Waste Containers are picked and sent to the Johnson Canyon Landfill for processing.



Yard Waste is ground up and screened and sent to partnering compost producer.



The large piles are then created that turns all the Yard Waste into compost.



Material is then sent to a composter who further process it to remove any unwanted items and create compost you buy at the store for our agricultural Community and home use.



Recyclable Containers are picked up and sent to a local Recycling Center.



Once at the Recycling Center they are sorted by type of material.



They are then packed into larger containers and shipped to other centers where they are processed into materials that can be used to create other materials.



New items are created using these recycled materials, closing the loop for a sustainable future.

“Our Values”

Fiscal Prudence

	FY 2007-08	FY 2008-09	Proposed FY 2009-10
<u>Revenues</u>			
Tipping Fees	\$ 13,796,630	\$ 14,075,410	\$ 13,116,400
South Valley Waste Fees	\$ 2,281,000	\$ 2,305,500	\$ 2,377,800
Investment Earnings	\$ 829,000	\$ 1,265,000	\$ 965,000
Grants & Other Revenue	\$ 256,000	\$ 265,000	\$ 250,000
TOTAL REVENUE	\$ 17,162,630	\$ 17,910,910	\$ 16,709,200
<u>Expenditures</u>			
Administration	\$ 2,472,900	\$ 2,413,820	\$ 2,185,010
Resource Recovery	\$ 2,325,450	\$ 2,014,170	\$ 1,831,410
Scalehouse Operations	\$	\$	\$ 377,300 ^a
Landfills Operations	\$ 5,273,590	\$ 4,430,630	\$ 3,641,610
Transfer Stations Operations	\$ 2,291,855	\$ 2,962,090	\$ 2,450,620
ECS Operations	\$ 557,125	\$ 547,800	\$ 523,200
Closure Costs	\$ 1,023,810	\$ 1,122,930	\$ 445,000
Debt Service	\$ 3,134,910	\$ 3,140,020	\$ 3,138,260
TOTAL EXPENDITURES	\$ 17,079,640	\$ 16,631,460	\$ 14,592,410

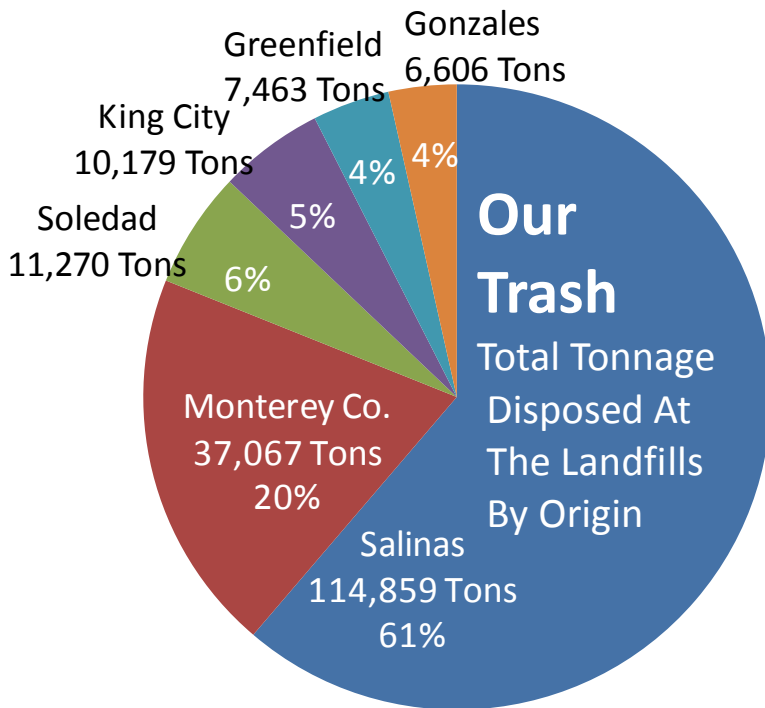
^a - Authority assumed responsibility of scalehouse operations effective September 2009



Financial Information

For the fiscal year ended June 30, 2009, the Authority landfilled 187,486 tons of solid waste generated from the Authority's service. This is a decrease of 8.8% over the previous year's total of 205,534. As of June 30, 2009, the Authority also accepted 84,322 tons from South Santa Clara Valley for a combined total of 271,808 tons. This is a 7.0% decrease over the previous year's total landfilled tonnage of 292,273.

The net revenue earned for the guaranteed minimum importation of waste from South Valley Disposal during this year was \$2,333,494. This revenue has been isolated in a separate fund designated by the Board for the search, analysis and development of supplemental capacity, the payment of fees and closure costs for the Crazy Horse Landfill and exploring alternative technologies.

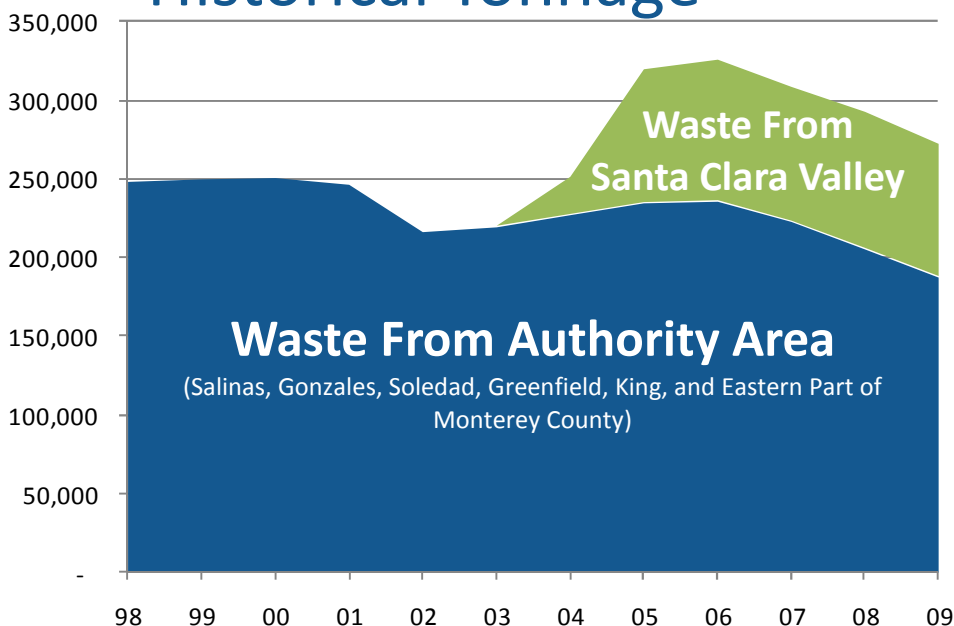


Your Monthly Trash Bill Pays For:

- 12 Container pickups a month (4 Trash, 4 Garden, 4 Recyclables)
- Delivery to Landfill, Transfer Station, or Recycling Center.
- Various Equipment to Unload, Compact & Cover Waste.
- Proper and Safe Disposal of Hazardous & Toxic Waste
- Constant monitoring of air, soil and water to protect environment.
- Educational Programs Promoting Greater Recycling Efforts.

One single trash container is handled by up to EIGHT workers through the disposal process

Historical Tonnage



Our Values

"Community Partnership"

In some ways our business is very simple.....we provide people with the resources and education to improve their communities. Salinas Valley businesses are the economic backbone of our communities and contribute to our region's high quality of life.

Our Mission:

"To manage Salinas Valley solid waste as a resource, promoting sustainable, environmentally sound and cost effective practices through an integrated system of waste reduction, reuse, recycling, innovative technology, customer service and education."

In all of this, one thing remains constant. We understand our responsibility to behave ethically, to value the impact we have on people and communities and to fairly consider the interest of those communities. This is an integral part of our business strategy and one of our core values. We believe this value strengthens the community in which we work and live.

Strengthening our Community

The Authority

- Provides Education and Resources to the community
- Sponsors RecycleRama
- Participates in many annual events both as recycler and educator
- Provides technical assistance to businesses and institutions interested in optimizing production processes, reducing waste, recycling—and saving money.
- Strengthens community partnerships by joining: Chamber of Commerce and SUBA
- Partners with Hope Services to provide job opportunities to adults with developmental disabilities to become valued and participating members our communities.

RecycleRama

RecycleRama is an outreach program that is sponsored by the Authority. Performing more than 100 shows for various schools and other organization throughout our area.

Reducing, Reusing and Recycling is the message

RecycleRama presents to the audience, through interactive performances

Schools & Organization Visited by RecycleRama



Alisal Elementary
Boronda Meadows
Boys & Girls Club
Bradin Elementary
Castroville
Cesar Chavez
Crescent Elementary
Del Rey Elementary
Echo Valley
El Gabilan
Elkhorn
Frank Ledesma
Frank Paul

Gabilan
Gonzales Recycling Fiesta
HSBC Family Center
Jack Francioni
La Gloria
Lincoln
Salinas Adult School
Loma Vista
Los Padres
Loya
Madonna Del Sasso
Mission Park
Martin Luther King

Monterey Park
Montessori
New Republic
North High
Recycling Festival
Roosevelt
Rose Ferrero
Sacred Heart
San Vicente
Sherwood
Spreckles
Steinbeck
Washington Middle School

Diversion

For the year ended June 30, 2009, the Authority diverted 36,814 tons from the Authority's service area. This is a decrease of 6.2% over the same quarter of the previous year.

As the Recycled Materials Table shows, the majority of all the diverted materials are composed of asphalt and concrete (5%), metals (5%), wood and green waste (70%), and C&D material (16%). Most wood and green waste is prepared composting. A total of 617 tons of green waste was used as Alternative Daily Cover (ADC) at Johnson Canyon Landfill. The concrete and asphalt diverted material is used as road base at the landfill.

There is significant diversion being done by businesses in the community who deal directly with recyclers as well as residential programs managed by the haulers. That diversion is not included in this report. This report is only for materials diverted at the Authority landfills and transfer stations. To better understand these amounts Resource Recovery staff conducts waste audits for businesses and public facilities.

Recycled At Authority Facilities

Type	Tons
Wood and Green Waste	26,554.86
Demolition (C & D)	4,365.40
Concrete and Asphalt	3,307.63
Metals and Appliances	1,019.98
Cardboard	339.17
Universal Waste	266.52
Mattresses and Box Springs	228.75
Tires and Altered Tires	215.69
Salvaged Metal/App (landfill)	160.21
Salvaged Metal/App (C&D)	126.73
Plastic	96.45
Recyclables	74.49
White Goods	55.93
Total Tons	36,814.33

Quick Fact

WHAT IS AB 939?

AB 939 is a Bill passed in 1989 that requires all cities within the state to reach a 50% waste reduction goal by the year 2000 and beyond.



Authority Historical Annual Diversion Rates

CITY	2005	2006	2007	2008
Salinas	60%	61%	70%	71%
Gonzales	45%	40%	51%	51%
Soledad	54%	50%	58%	62%
Greenfield	23%	24%	34%	36%
King City	78%	78%	78%	80%
County of Monterey	63%	54%	N/A	N/A

The Authority has taken this environmental mandate further by striving to achieve 75% diversion by the year 2015. Each City in the Authority jurisdiction is working to promote recycling and contributes to reaching our goal of 75% diversion. We are implementing various programs to promote Reducing, Re-using and Re-cycling in our communities. From educational presentation to schools and workplaces to waste audits that help businesses identify where they can save money by recycling.

Our Values

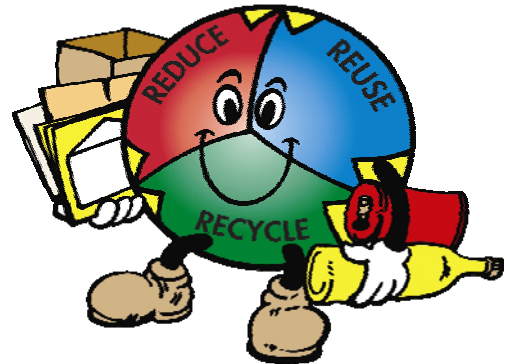
“Public Education”

Bag Monster

This is the "Bag Monster". The costume was designed to be worn at special events as an outreach tool to show people how plastic bags are overused and to promote the use of reusable bags. There are from 550 to 700 plastic bags attached to each costume. This number is used to signify how many plastic bags are used by each Californian every year. The "bag monster" carries a sign that states this information on one side and "Choose to Reuse" on the other side. The bag monster is well received at special events and is very effective for creating a visual image of the excessive use of plastic bags.



Each year one person in California can use up to 550 plastic bags!



Teaching Recycling in a Second Language

Salinas Valley Solid Waste Authority sponsors a recycling/waste reduction lesson plan for the Salinas Adult School's *English as a Second Language* (ESL) program through a company called C² Alternative Services. The purpose of the "Family Clean-Up" lesson plan is to introduce students to the concept of the "3 R's" by providing teachers with an environmental education plan that they can incorporate into their curriculum, while offering resources that are helpful in teaching English. Some teachers may use this lesson as part of a larger component of environment education; others may choose to use it as a standalone lesson. By participating in the Family Clean-up Recycling lesson, students learn: that it is **never** OK to litter; the importance of understanding what materials do and do not go into their garbage, recycling and yard waste containers; what materials do not go into any of the carts because they are considered household hazardous waste [and where to properly dispose them]; how to obtain money for some of their recyclables; and to share their newly attained education to others in their communities. The lesson plan also includes instructional tips for teachers and waste reduction tips for students, as well as website resources, educational literature and recycling and waste prevention facts. Teachers receive a \$50 stipend for each lesson taught and are asked to teach the lesson only once to each class in order to reach as many students as possible. In 2008, the Authority sponsored 30 classes at a cost of \$1,500.

Recycling & Waste Prevention Guide

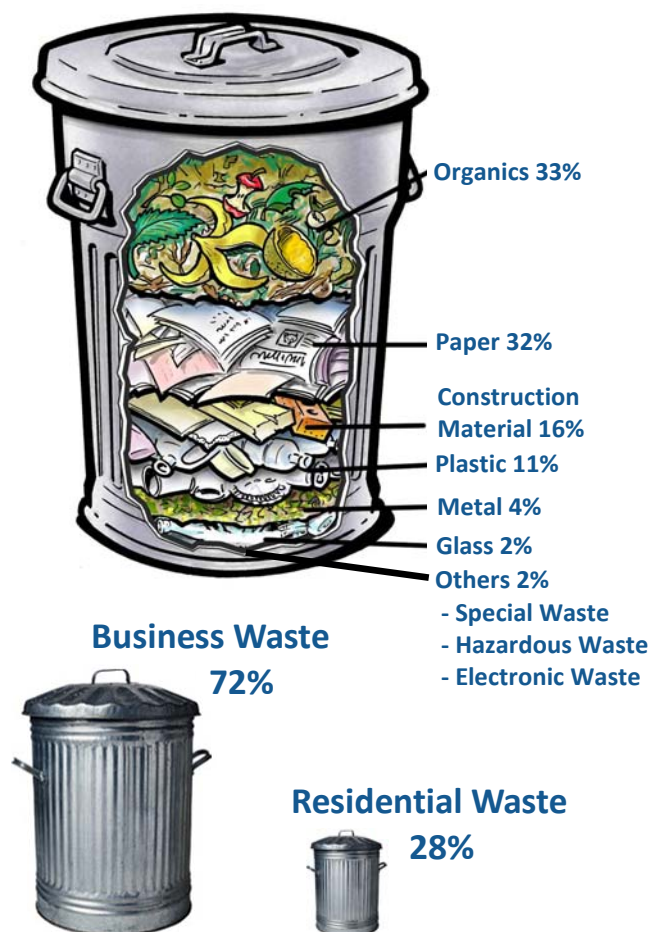
The Resource Recovery Department created the recycling and waste prevention guide as an educational tool for residents living within the Salinas Valley. It is a comprehensive publication that is customized to each city in the Authority's jurisdiction according to the city's waste hauler. The guide includes the Authority's facility locations, hours and accepted materials, as well as the waste hauler's contact information and information about the hauler's curbside recycling collection program. It also includes information on the proper disposal of materials such as bulky items (furniture), electronic waste, household hazardous waste, and tires. The guide serves as a waste prevention resource by offering tips on creating less waste, environmental purchasing and sustainable gardening, as well as including the locations of local buyback centers, reuse businesses and repair businesses. It comes with a magnetic hook for convenient access and is available in English and Spanish.



Solid Waste Characterization Study

In 2007, a Waste Characterization Study was performed throughout our area to figure out what is in our waste stream and where it comes from. As the figure shows to the right, most of the items in our waste stream can be recycled or reused.

A Waste Characterization Study is an analysis of the waste stream based on a process that isolates a specific load as it is delivered to a landfill or transfer station and sorts and weighs each of the elements. The purpose is to determine how much of each type of material is generated and where it comes from. Following the visual characterization of 665 incoming waste samples, divided into 86 material types, statistics are determined based on the total waste stream and applied to the residential, commercial and self haul waste from the Authority's six jurisdictions. From this information, the Authority can develop strategies and programs to target specific commodities to support efforts to achieve a 75% diversion goal.



Businesses create the majority of the waste our area. If you are a business or organization and would like to learn how to improve recycling and reduce your monthly bill. Please call us at 831-775-3000

Resource Recovery Team

The Resource Recovery Department is leading the way in promoting recycling. If there's a way to reduce, reuse or recycle. They will find it!

From batteries to tires the Resource Recovery Department works with business and residents in the community to find ways to reuse and recycle items.

Almost 3/4 of the waste in our area that goes into the landfills comes from business. During FY 2008-09 a total of 50 business and apartment complexes had waste audits completed for them. A waste audit is a free assessment of your waste generating practices designed to reduce waste while increasing your bottom line.

Resource Recovery uses high-tech software and industry expertise to help identify areas where your company can save money by sending less material to the landfill.



The average person in Monterey County produces 1,300 lbs of trash a year. That's 3 lbs of trash a day. Most of which is plastic & paper.

Educational Events Participated During FY 08-09

El Grito -City of Salinas
Cinco de Mayo Parade – City of Gonzales
Health and Safety Day – City of Gonzales
Health and Safety Day—City of Salinas
Dia del Trabajador Agricola –City of Greenfield
Farm Day –City of King
Farm Day—City of Salinas
Harvest Festival - City of Greenfield
Salinas Valley Fair – City of King
Monterey County Fair – City of Monterey
Parade of Lights—City of Salinas
Mo. Co. Health Dep. County Wide Clean Up Day
Soledad Chamber of Commerce Business Expo
City of Greenfield Clean-up Week HHW Event
City of Gonzales Clean-up Week HHW Event
City of King City Clean-up Week HHW Event
Salinas Chamber of Commerce Business Expo
Promotion of Sun Street Transfer Station
Monterey Bay Aquarium Community Day



Operations

Our Values “Efficiency”



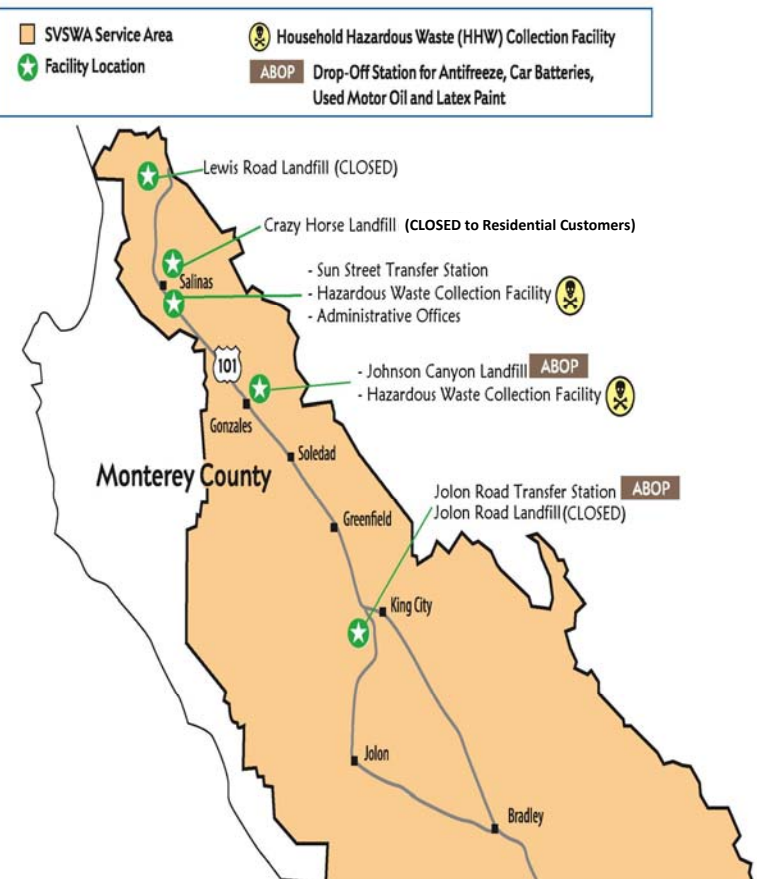
The Operations department is tasked with making sure all facilities are environmentally safe and provide the highest level of service and efficiencies.

Although two of the four Authority owned landfills in Monterey County are closed, they must be monitored and maintained after closure. This involves annual testing to monitor for landfill gas, migration and escape, gas flare emissions, leachate* and groundwater.

*Leachate is the liquid that drains or 'leaches' from a landfill. It varies widely in composition regarding the age of the landfill and the type of waste that it contains. It can usually contain both dissolved and suspended material.



Map of Facilities



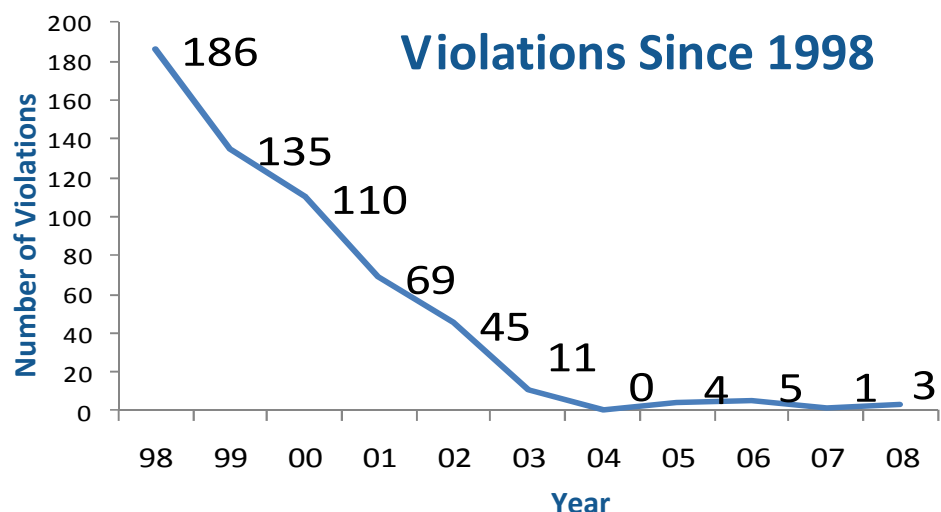
Projects



The Operations Department strives to provide the best quality of service to the 96,000 customers we serve each year. The Authority implements and sustains a variety of large-scale projects that ensure compliance, improve operational efficiency and help protect human and environmental health. Some of these projects include:

- A new landfill gas extraction system was installed at the Crazy Horse Landfill. Project consisted of install 50 wells 100+ ft deep to extract gasses from the landfill.
- Construction of Johnson Canyon Modules 4, 5, 6 B has been completed. Project consists of moving 800,000 cy of soil, and installing a multiple layer to prevent chemicals or liquids from seeping into the groundwater.
- Jolon Road Landfill was officially accepted as a closed site by the Integrated Waste Management Board.
- Planning is under way to construct a landfill gas-to-energy project at Johnson Canyon Landfill. Landfill will be used to generate 1.4 megawatt (MW) of energy. That's enough to power 1,400 homes.
- Planning is under way for the Closure of the Crazy Horse Canyon Landfill. The landfill has been in operations since 1934. The Project is expected to cost approximately 8.5 million dollars.

The Authority has work very hard to make all of our sites as environmentally safe as possible. Since the Authority took over responsibility in 1997, our hard efforts have resulted in the drastic reduction of violations from regulatory agencies shown below.



Future FY 2009-10

Construction of Crazy Horse Landfill Closure

The Crazy Horse Landfill is preparing to be fully closed. This will be the Authority's most expensive project to date with an estimated cost of 8.5 million dollars. Environmental control systems will be installed to monitor air, soil, groundwater, gas and other aspects of the landfill. Once work is completed and finalized, the site will be considered officially closed by the State.

Work Street Transfer Station

Currently negotiations are underway to relocate the Salinas Transfer Station to an area on Work Street. New facilities will be built on the Work Street Transfer Station that will produce more recycling opportunities.

Achieving 75% Diversion

The Authority is striving to achieve 75% Diversion from our landfills by the year 2015. This is no easy task as it involves promoting reducing waste, re-using materials and recycling. The Authority is working arduously by promoting several programs that work with schools, business, and housing complexes.

Recycling Ordinance

Recycling is essential to having a sustainable environment. That is why the Authority is working to establish a recycling ordinance for the Salinas Valley area. The purpose of this recycling ordinance is to promote recycling by requiring residents, businesses, owners of non-residential properties, public facilities and commercial buildings to source separate recyclable waste materials from all other solid waste for recycling and provide for the collection of recyclable materials.

Tire Amnesty

Have tires in your back yard you need to get rid of? Good news! A tire amnesty collection program is currently being planned for FY 2009-10 where the Authority will accept tires free of charge from residents in the Salinas Valley. Please call and ask to be placed on the notification list for the tire amnesty program. We will notify you of the dates and locations in your area once they are available.

Johnson Canyon Resource Management Park

With adoption of the 75% diversion goal and the exploration by the Board's Conversion Technology Commission on alternatives to landfilling, the long range planning for the Johnson Canyon Landfill shifted toward the development of a Resource Management Park. The Board further supported these efforts with the adoption of a Vision Statement in April 2009 which encourages 1) recovery of waste for its highest and best use; 2) transformation of the Authority's business from burying waste to utilizing it as a resource; and 3) eliminating the need for landfills. Possible future activities may include a Materials Recovery Facility; organics processing by composting, autoclaving or anaerobic digestion; an ethanol biorefinery project; and conversion technologies to process residual waste which cannot be recycled and would otherwise be landfilled.



Salinas Valley Solid Waste Authority

www.svswa.org

128 Sun Street, Suite 101

Salinas, CA 93901

Phone - (831) 775-3000

For questions or comments please call
(831) 775-3000