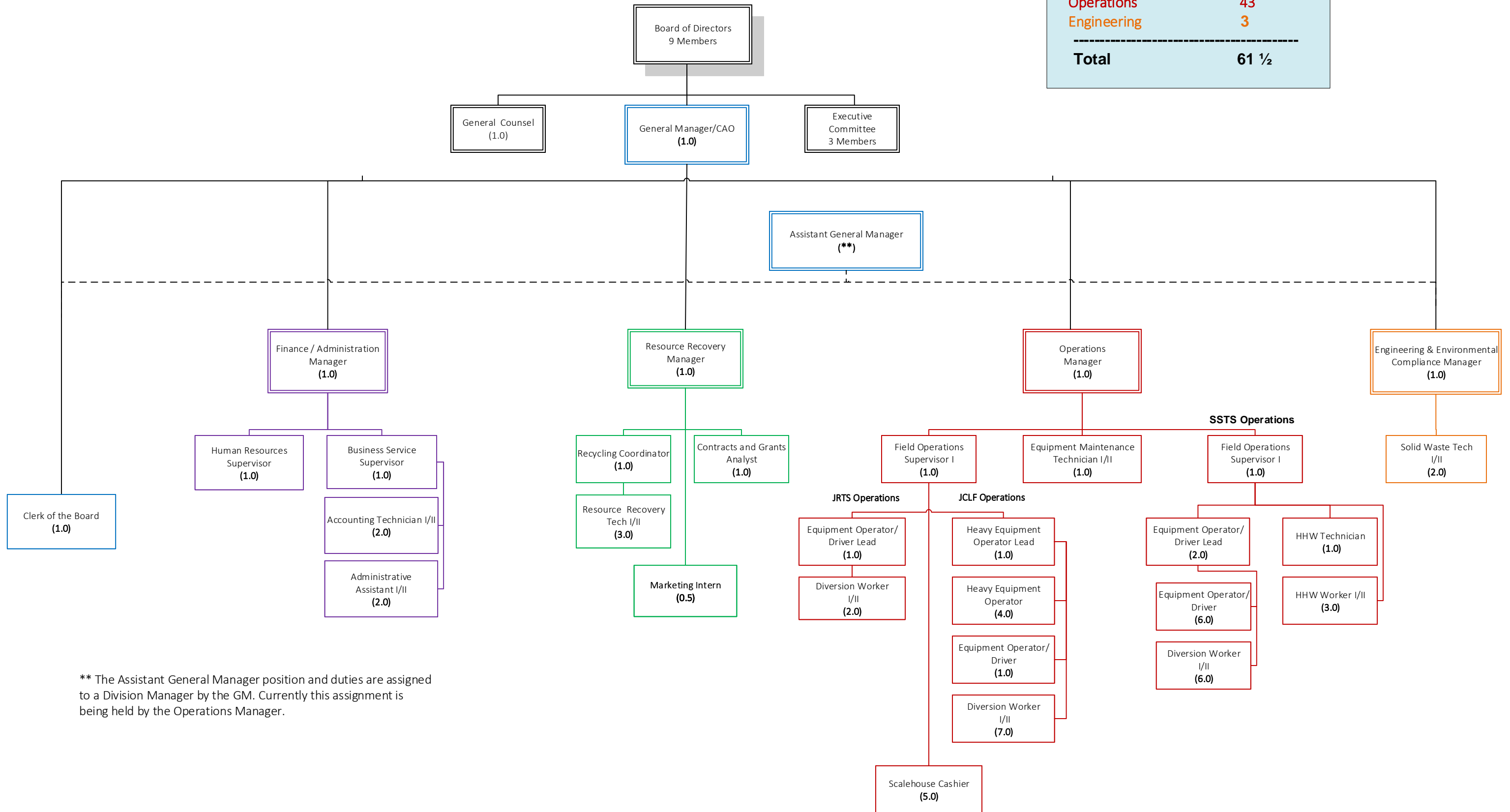


Salinas Valley Solid Waste Authority Organizational Chart

Proposed Effective Date: July 1, 2020

Executive Administration	2
Finance & Administration	7
Resource Recovery	6 ½
Operations	43
Engineering	3
<hr/>	
Total	61 ½



** The Assistant General Manager position and duties are assigned to a Division Manager by the GM. Currently this assignment is being held by the Operations Manager.