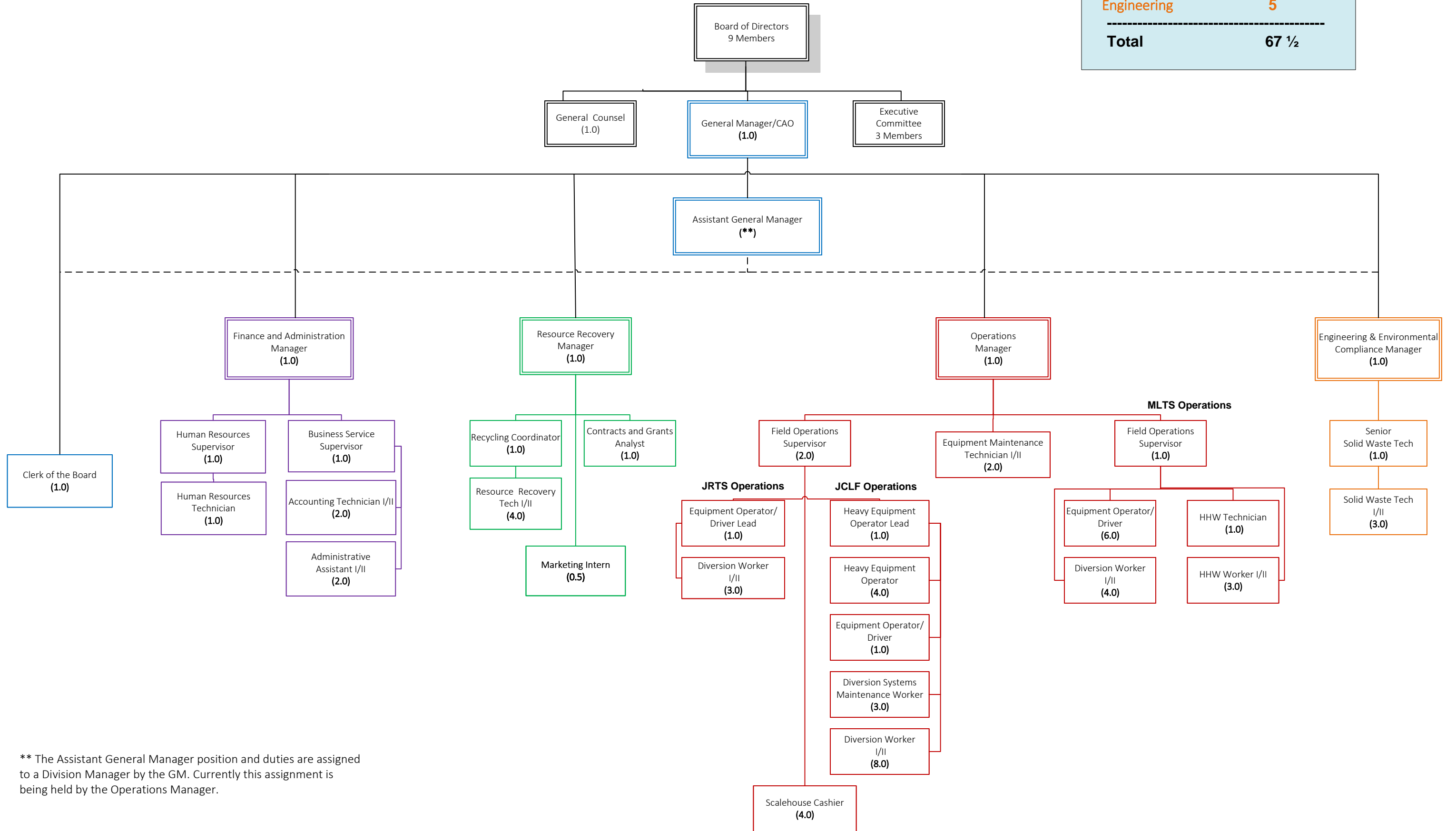


Salinas Valley Solid Waste Authority Organizational Chart

Proposed Effective Date: May 12, 2025

Executive Administration	2
Finance & Administration	5
Resource Recovery	7 ½
Operations	45
Engineering	5
<hr/>	
Total	67 ½



** The Assistant General Manager position and duties are assigned to a Division Manager by the GM. Currently this assignment is being held by the Operations Manager.