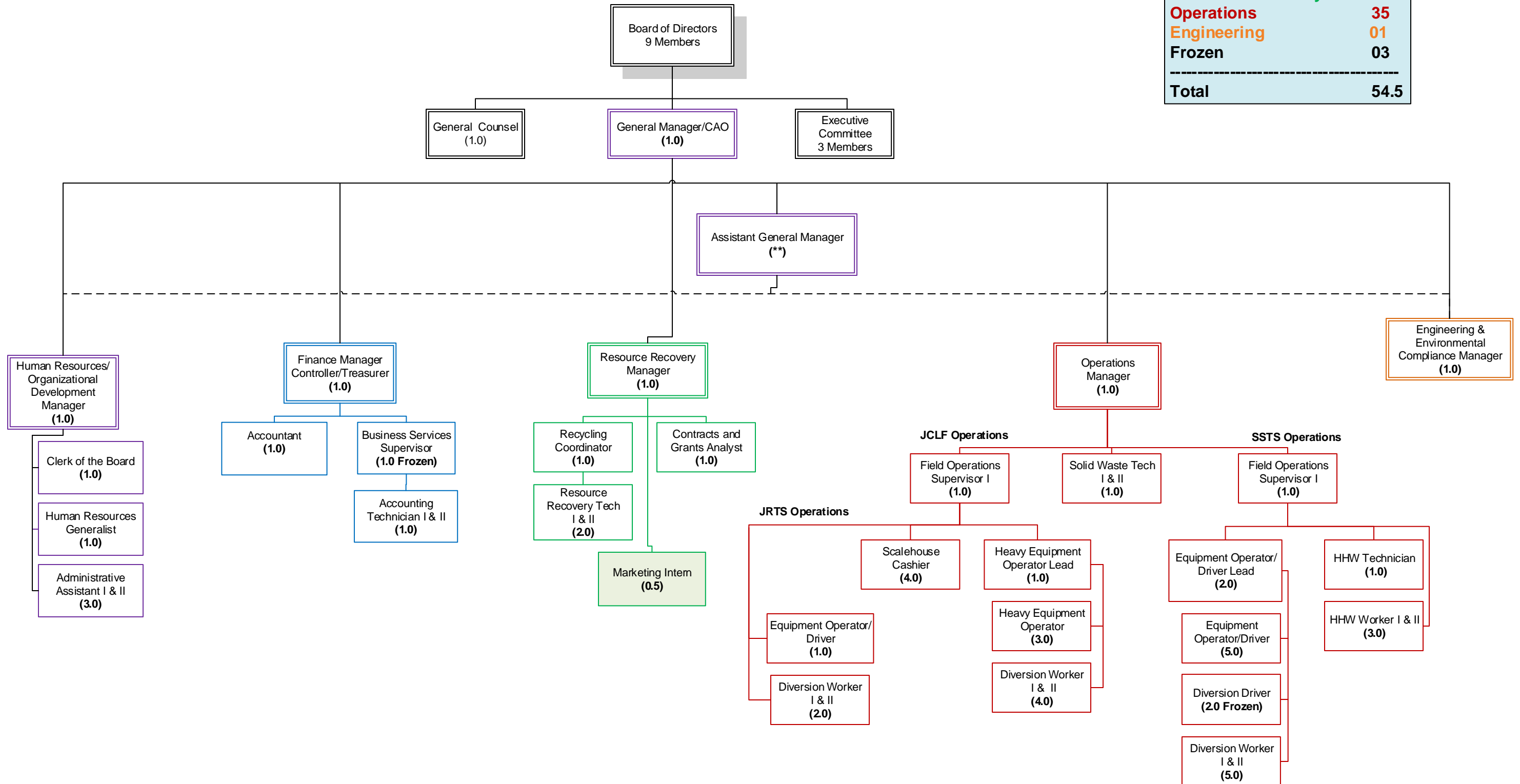


Salinas Valley Recycles Organizational Chart

Effective Date: November 01, 2016

| | |
|-------------------|-------------|
| Administration | 07 |
| Finance | 03 |
| Resource Recovery | 05.5 |
| Operations | 35 |
| Engineering | 01 |
| Frozen | 03 |
| <hr/> | |
| Total | 54.5 |



** The Assistant General Manager position and duties are assigned to a Division Manager by the GM.