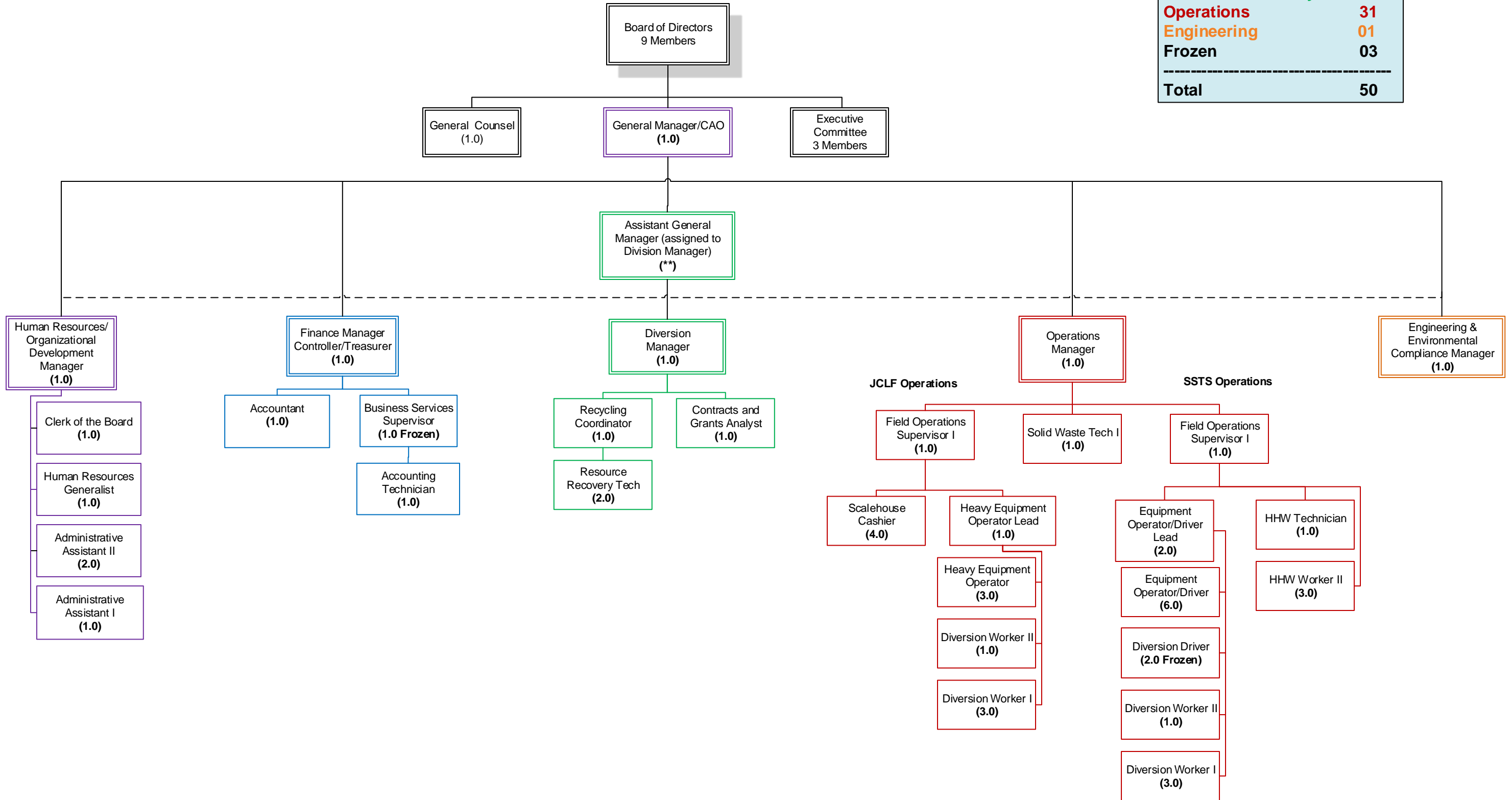


# Salinas Valley Recycles Organizational Chart

Proposed Effective Date: July 1, 2016

Administration	07
Finance	03
Resource Recovery	05
Operations	31
Engineering	01
Frozen	03
<hr/>	
<b>Total</b>	<b>50</b>



\*\* The Assistant General Manager position and duties are assigned to a Division Manager by the GM. Currently this assignment is being held by the Diversion Manager.